

Technics Music App User Guide

Overview

The Technics Music App enables you to select a music source and playback equipment, and create playlists easily and comfortably on the screen of a tablet or smartphone. When used with the Technics network audio player, the Music App screen displays the music stored on a connected DLNA-compatible server, content stored on the device running the App.

By using SU-R1/SU-R1A/ST-C700,
music files on connected USB memory devices, giving you integrated playback control.
Used with the Technics amplifier, the Technics Music App not only allows you to control the volume and playback operations but also lets you adjust the Bass, Mid and Treble levels.

By using SU-G30/ST-C700D/OTTAVA™ SC-C500/SU-C550/ OTTAVA™ f SC-C70,
music files on connected USB memory devices or songs on CD, giving you integrated playback control.
the Technics Music App not only allows you to control the volume and playback operations but also lets you adjust the Bass, Mid and Treble levels.
And this App allows you to control the power and setup.
Additionally this App allows you control Internet Radio(vTuner) ,Spotify and TIDAL.

By using OTTAVA™ f SC-C70,
On your iOS device, you can measure the location between your iOS device and Technics product.

And the Music App allows easy operation of tasks such as CD ripping, tag editing, import from USB/backup, USB-Audio playback, and various settings when used with Technics Music Server ST-G30.

Main Features

Simple and Intuitive Menu

- DLNA Playback(support Gapless playback*1)

*1 Supported file formats are WAV/FLAC/AIFF/ALAC/DSD.

But this Gapless playback may not be available depending on the file.

- USB Memory Playback

(supported by SU-R1/SU-R1A/ SU-G30/ST-C700/ST-C700D/OTTAVA™ SC-C500/SU-C550 /OTTAVA™ f SC-C70) *2

- CD Playback(supported by OTTAVA™ SC-C500/SU-C550/ OTTAVA™ f SC-C70) *3

*2,*3 To use these function, please also update

- OTTAVA™ SC-C500: ver1.19 or later.
- SU-C550:ver1.18 or later.

In detail, please refer to the following support page.

<http://www.technics.com/support/firmware/>

- Multi Device Playlist Functions (on App, called as “Local Playlist”) *4

- Bass/Mid/Treble Control on Technics Products *5

*4 Unable to include USB memory/CD as multi device Playlist.

*5 Will not function when using Bluetooth® as a music source.

- Power Control on Technics Products

(supported by SU-G30/ST-C700D/OTTAVA™ SC-C500/SU-C550/OTTAVA™ f SC-C70)

- Setup Control on Technics Products

(supported by SU-G30/ST-C700D/OTTAVA™ SC-C500/SU-C550/ OTTAVA™ f SC-C70)

- Search for song

- Switch vertical position with horizontal position

- Change Background color

- Control Internet Radio(vTuner) and Spotify*6

(supported by SU-G30/ST-C700D/OTTAVA™ SC-C500/SU-C550/ OTTAVA™ f SC-C70)

*6 To use these function, please also update

- SU-G30:ver1.10 or later.
- ST-C700D: ver1.00 or later.
- OTTAVA™ SC-C500: ver1.15 or later.
- SU-C550:ver1.14 or later.

In detail, please refer to the following support page.

<http://www.technics.com/support/firmware/>

- Control TIDAL*7

(supported by SU-G30/ ST-C700D/OTTAVA™ SC-C500/SU-C550/ OTTAVA™ f SC-C70)

*7 To use this function, please also update

- SU-G30: ver1.16 or later.
- ST-C700D: ver1.02 or later.
- OTTAVA™ SC-C500: ver1.27 or later.
- SU-C550: ver1.26 or later.

In detail, please refer to the following support page.

<http://www.technics.com/support/firmware/>

- Support MQA Technology*8

(supported by SU-G30/ ST-C700D)

*8 To use this function, please also update

- SU-G30: ver1.17 or later.
- ST-C700D: ver1.03 or later.

In detail, please refer to the following support page.

<http://www.technics.com/support/firmware/>

- Support TIDAL Masters*9

(supported by SU-G30/ ST-C700D// OTTAVA™ f SC-C70)

*9 To use this function, please also update

- SU-G30: ver1.19 or later.
- ST-C700D: ver1.05 or later.

In detail, please refer to the following support page.

<http://www.technics.com/support/firmware/>

-Support Space Tune(supported by OTTAVA™ f SC-C70)

- CD ripping, tag editing, import from USB/backup, USB-Audio playback, and various settings with Technics Music Server ST-G30

※In detail, please see the “Technics Music App User Guide(ST-G30 control guide)”.

Compatible models

- SU-R1/Network Audio Control Player
- SU-R1A/Network Audio Control Player
- SU-G30/Network Audio Amplifier
- ST-C700/ST-C700D/Network Audio Player
- OTTAVA™ SC-C500/CD stereo system
- SU-C550/CD Stereo Amplifier
- ST-G30/Music Server
- OTTAVA™ f SC-C70/Compact Stereo System

Volume control and Bass/Mid /Treble levels adjustment are only available with the following combinations of Technics Products.

- SU-R1 together with SE-R1
- SU-R1A together with SE-R1
- SU-G30
- ST-C700/ST-C700D together with SU-G700/SU-C700
- OTTAVA™ SC-C500
- SU-C550
- OTTAVA™ f SC-C70

Support OS

iOS : support more than iOS 8

Before starting

To use the DLNA function, you need to connect the Technics product (SU-R1/SU-R1A/SU-G30/ST-C700/ST-C700D/OTTAVA™ SC-C500/SU-C550/OTTAVA™ f SC-C70) to a network router)

Be sure to set up your network router so that your device can be connected.

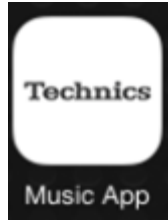
If you need any assistance for the network setup, please contact your router provider.

Before starting, make sure that the Technics product is connected to your network router and that your device is connected to your network router.

To use Internet Radio(vTuner) and Spotify, make sure that the network router is connected to the Internet.

Let's get started

After installing the Technics Music App from App Store on your device, tap the Technics Music App icon on your device to launch this App.



Switch a Speaker System

You can switch the Speaker System.

You can show the Speaker System list by tapping the speaker button.

Next, you can select the Speaker System.

Note:

- After you select the Technics product as “DLNA” on Speaker System, you cannot control playback from the Technics product.

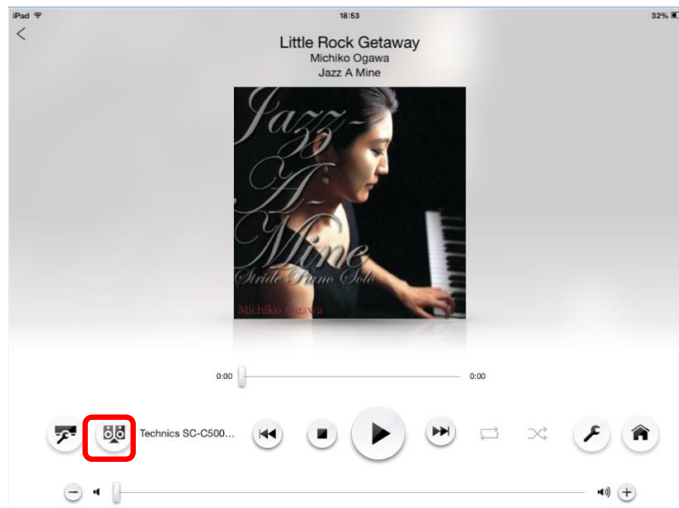
(When you control from ST-C700D/OTTAVA™ SC-C500/SU-C550/SU-G30/OTTAVA™ f SC-C70, this displays “Remote Mode”.)

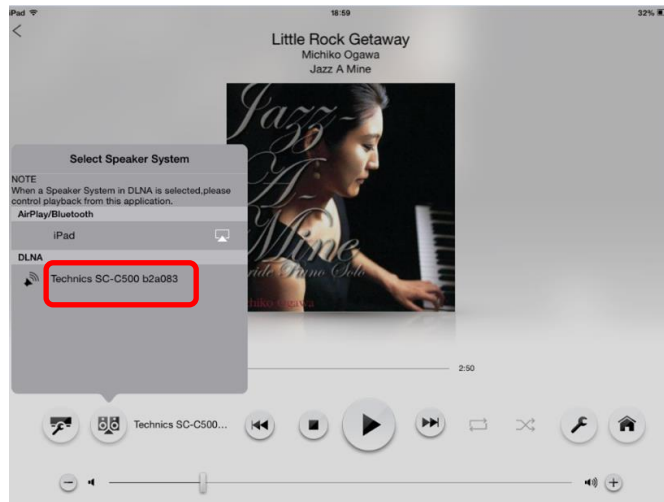
When you want to control playback from the Technics product, change

“LAN” mode(SU-R1/SU-R1A/SC-C700)/

“DMP” mode(SU-G30/ST-C700D/OTTAVA™ SC-C500/SU-C550/ OTTAVA™ f SC-C70) with the remote control.

- When you want to control Airplay, please use iOS device itself control.
- When you select OTTAVA™ f SC-C70, clock in the device will be set to the product automatically.





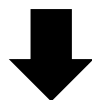
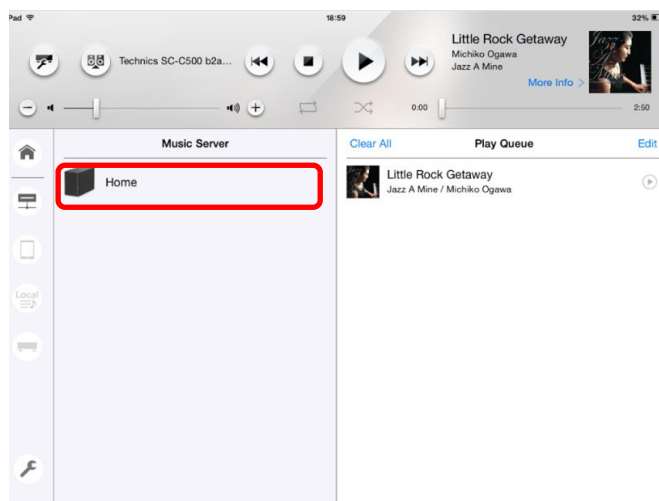
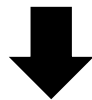
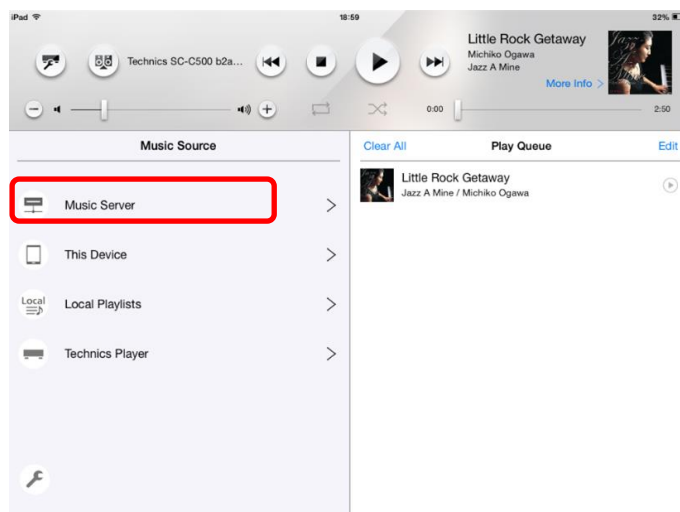
Select song

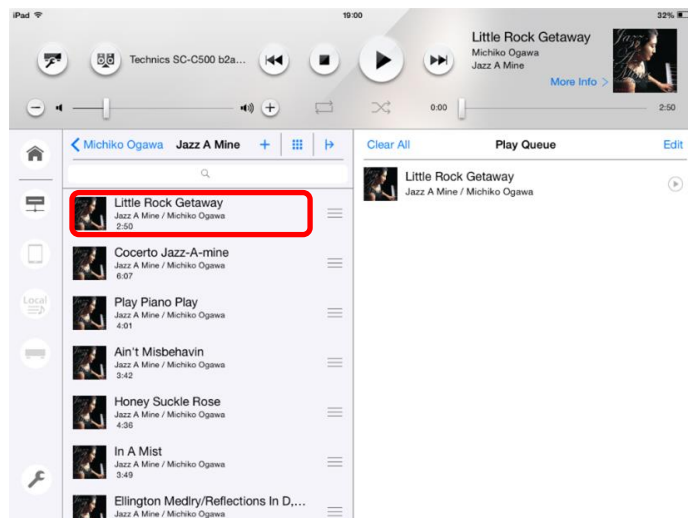
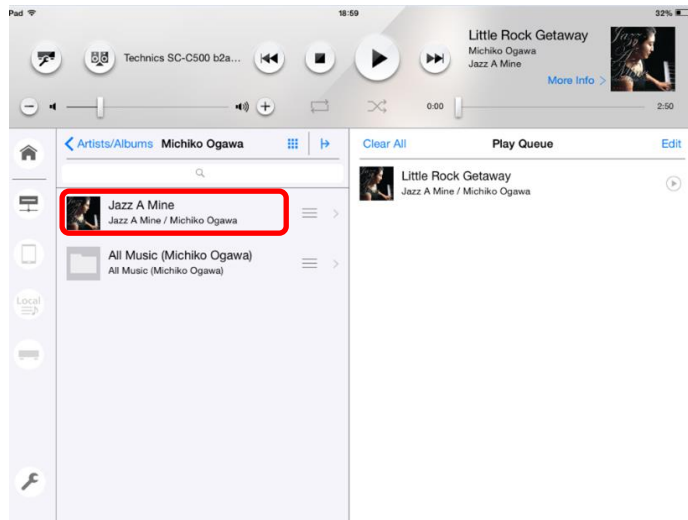
Select song in DLNA server

If the DLNA server or the network hard disk (NAS: Network Attached Storage) is on the same network, you can select "Music Server" and then select the device name from the list. After the device is selected, select the song by Artist or Album etc.

Note:

- To play DSD song, you need DLNA server or NAS that supported to play DSD song.
- Depending on the NAS to connect, playback or pause operation from apps may not be possible.

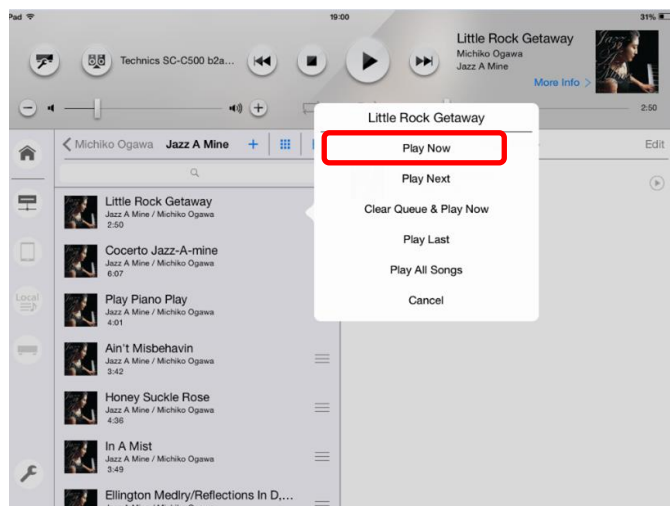
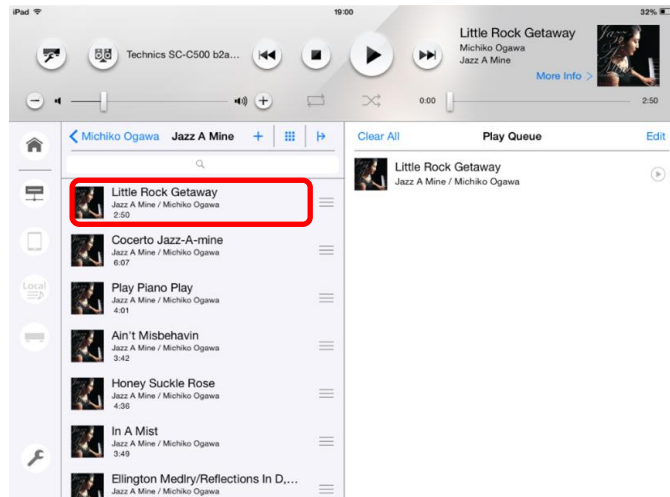




When you select a song, pop up window is displayed. You can select the method of play.

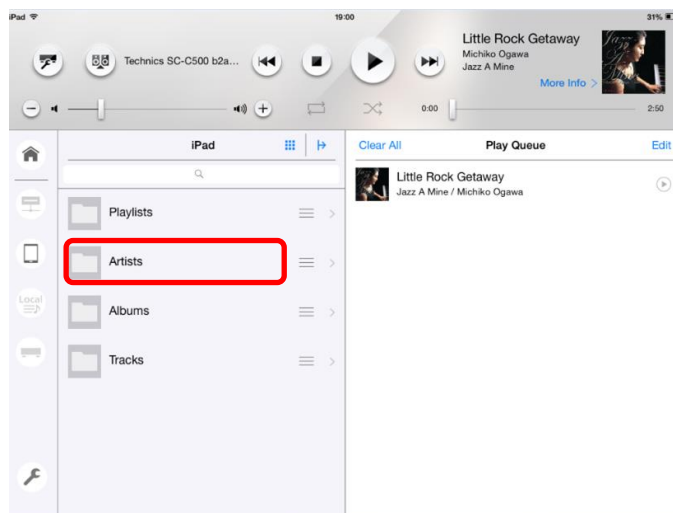
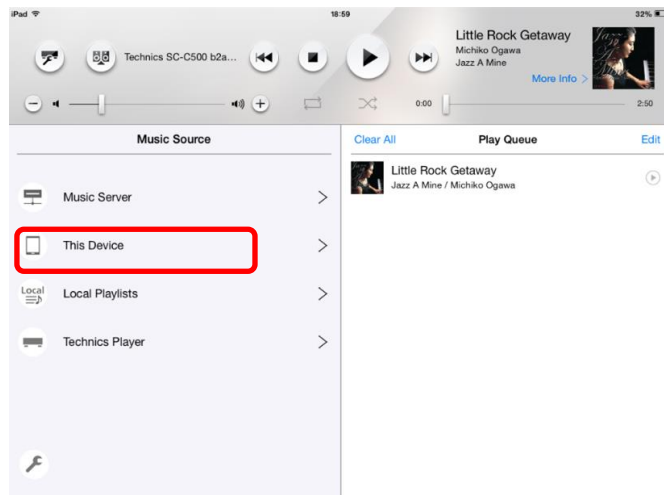
- “Play Now”: Play the selected song
- “Play Next”: After finishing the current song, play the selection as the next song
- “Clear Queue & Play Now”: Clear the songs in Play Queue, and then, play the selected song
- “Play Last”: Play as the last song in Play Queue
- “Play All Songs”: Play all selected song in the folder.

Play songs are registered in Play Queue, and you can play by tapping the song in Play Queue.



Select song in your device

When you want to play a song on your device, tap "This device" .
After the device is selected, you can select the song by Artist or Album etc.
The play flow is same as "Select song in DLNA server" .



Select song in Local Playlist

You can save Play Queue as Local Playlist.

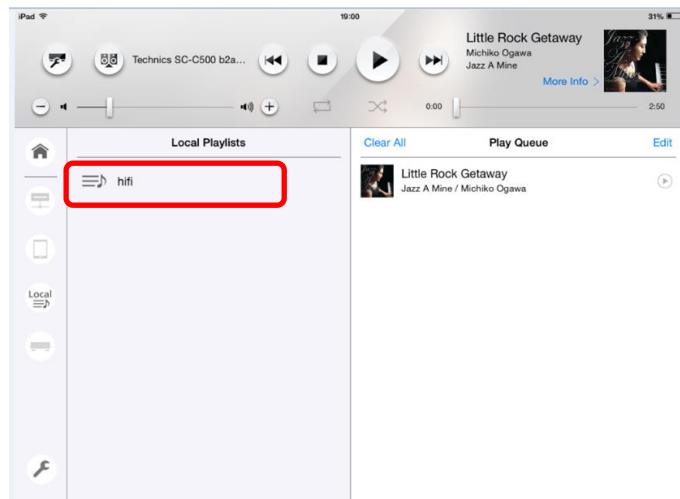
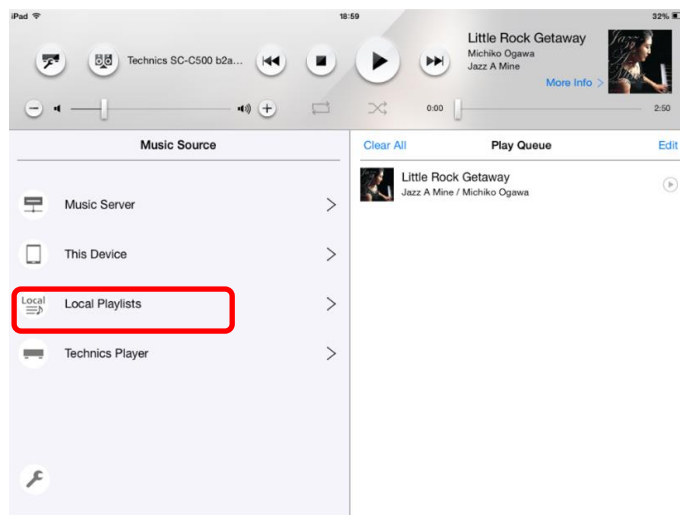
First, you need to make a Local Playlist (please refer to "Make Local Playlists").

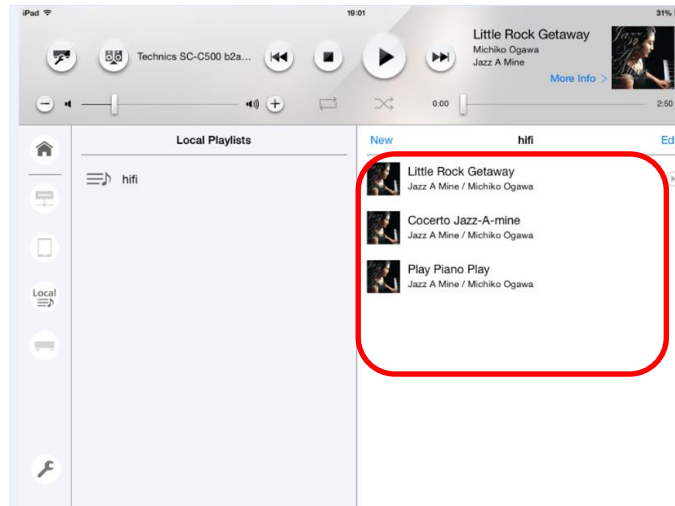
Then, when you want to play the song in a Local Playlist, tap "Local Playlists".

After a Playlist is shown, you can select the Playlist.

Next, songs in the Local Playlist are shown in Play Queue area.

Play any songs by tapping the song name.





Select song in USB memory

You can play songs on a USB memory plugged into Technics Product .

Select the Technics product as “DLNA” on Speaker System, and tap ”Technics Player”.

Next, select "USB".

The song selection screen for the USB memory will be displayed.

The play flow is the same as “Select song in DLNA server “.

Note:

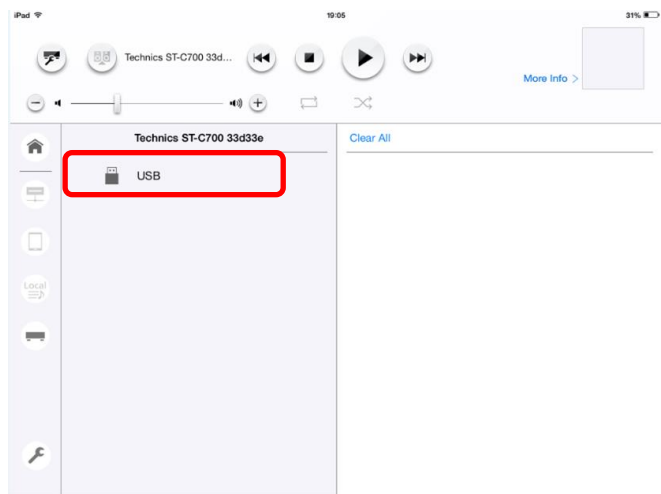
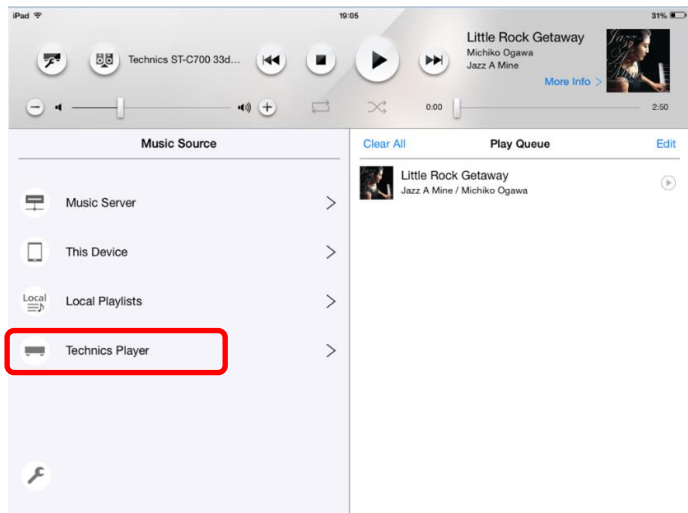
- After selecting “USB”, the screen of Technics Product will be changed to "Remote Mode".
In this mode, you cannot control playback from the Technics Product.
When you want to exit the "Remote mode" ,you can change to another input mode with the remote control.
- You can register only song that are in the same folder as USB Play Queue.
- When you remove the USB memory from the Technics Player, USB Play Queue will be cleared.
- When you select other “Music Source” on App, USB Play Queue will be cleared.
- The seek function will be available only on the playback screen.
- Album art cannot be shown during selecting song in USB.
- To use this function, please also update
 - SU-G30:ver1.12 or later.
 - ST-C700D:ver1.00 or later.
 - OTTAVA™ SC-C500: ver1.19 or later.
 - SU-C550:ver1.18 or later.

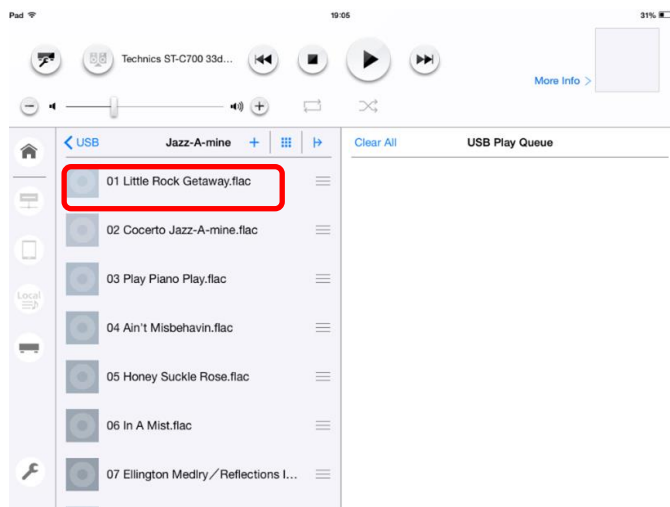
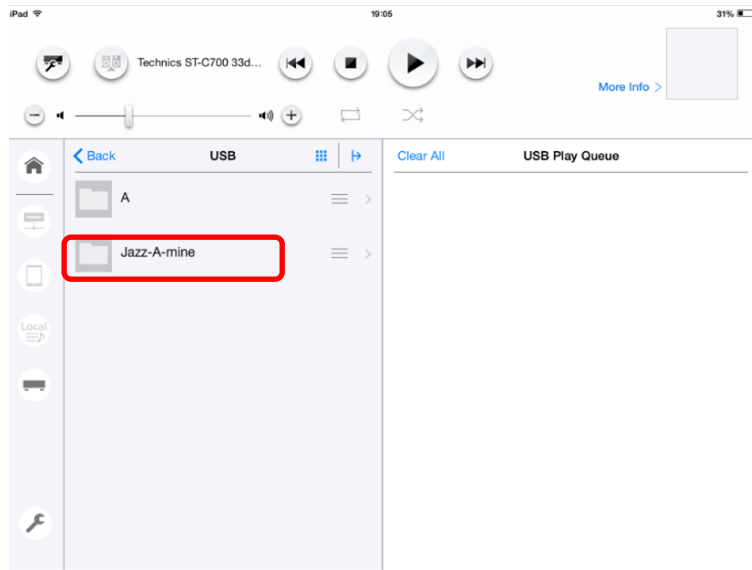
In detail, please refer to the following support page.

<http://www.technics.com/support/firmware/>

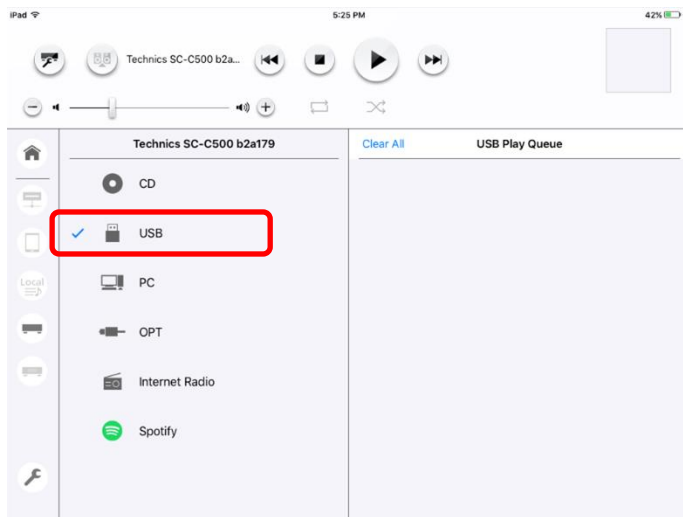
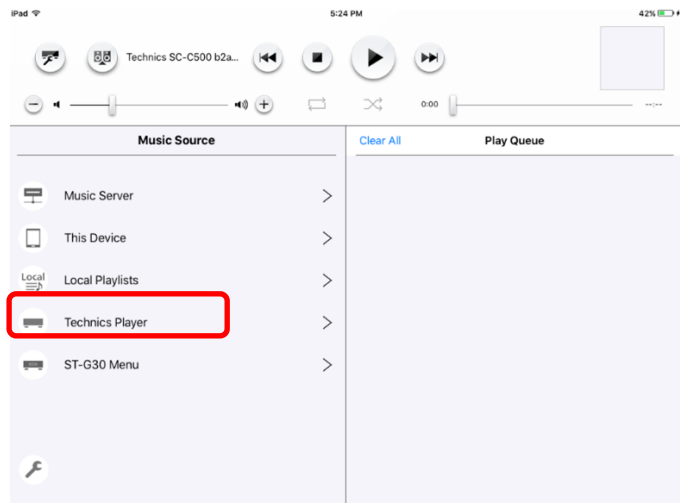
- To use this function by OTTAVA™ f SC-C70,please user Technics Music App: ver1.9.0 or later.

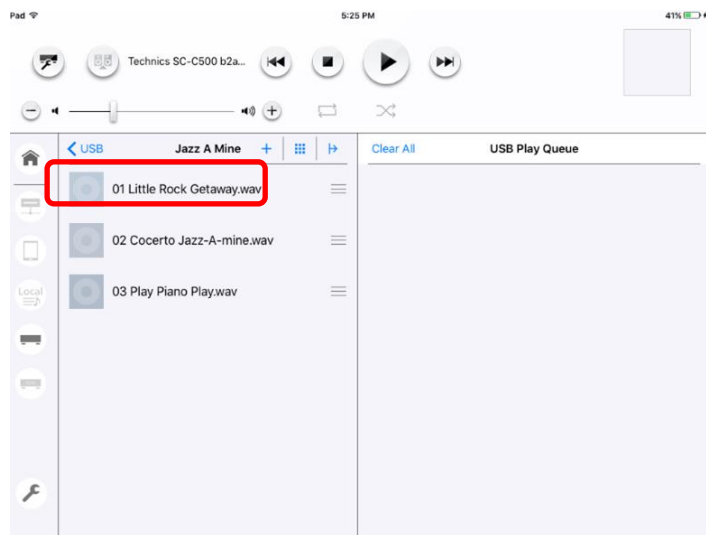
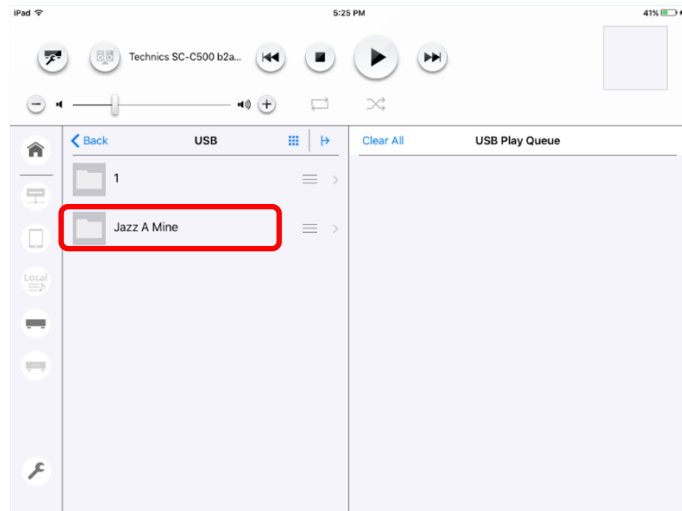
- SU-R1/SU-R1A/ST-C700





- SU-G30/ST-C700D/OTTAVA™ SC-C500/SU-C550/ OTTAVA™ f SC-C70





Select song on CD

You can play songs on CD using with Technics Product.

Select the Technics product as “DLNA” on Speaker System, and tap ”Technics Player”.

Next, select "CD".

The song selection screen for the CD will be displayed.

The play flow is the same as “Select song in DLNA server “.

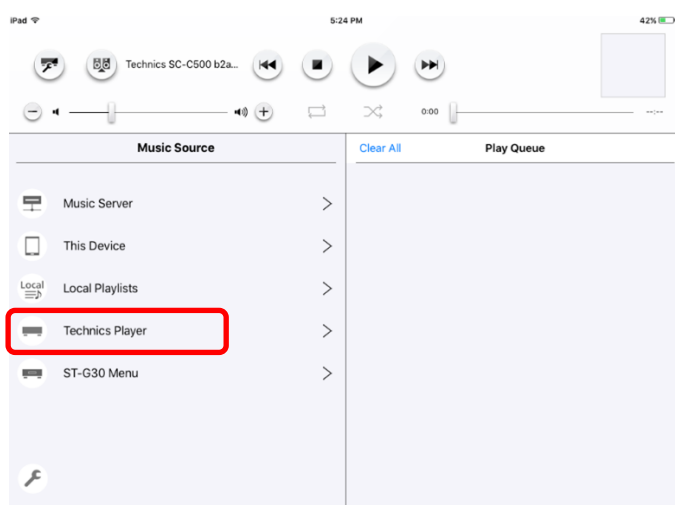
Note:

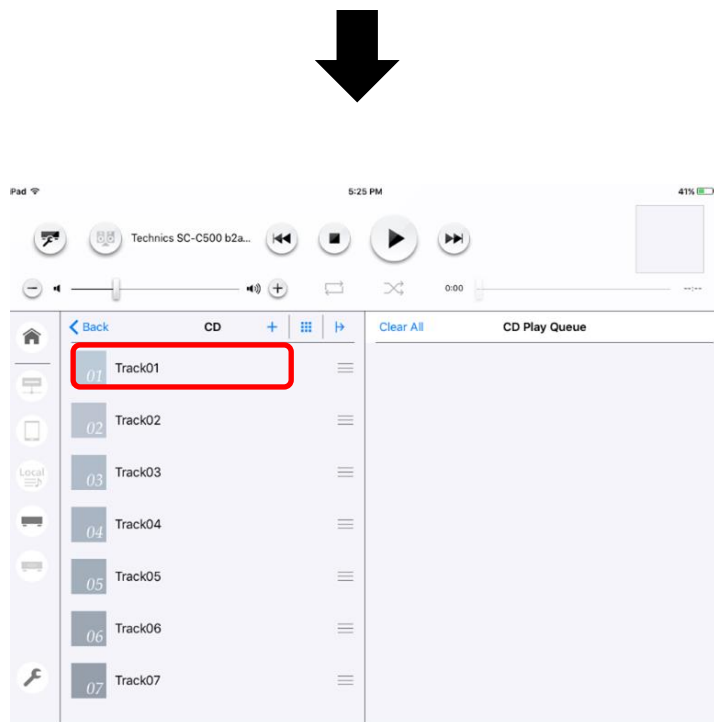
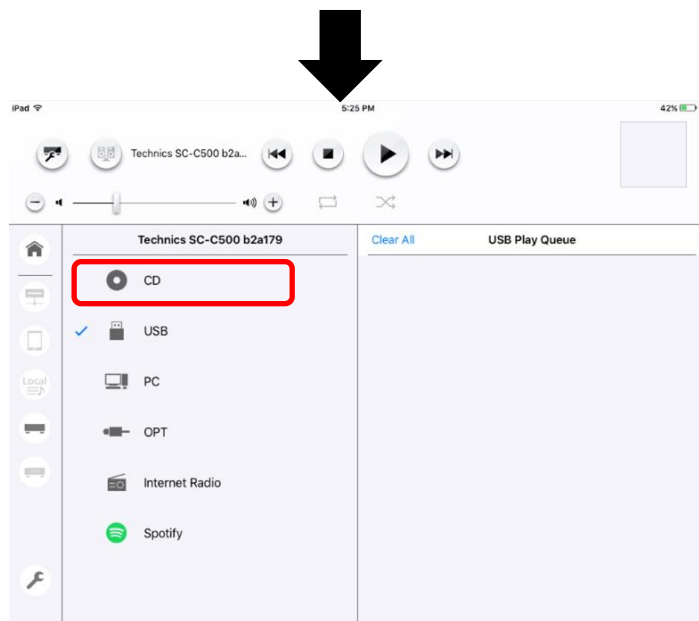
- After selecting “CD”, the screen of Technics Product will be changed to "Remote Mode".
In this mode, you cannot control playback from the Technics Product.
When you want to exit the "Remote mode", you can change to another input mode with the remote control.
- When you remove the CD from the Technics Product, CD Play Queue will be cleared.
- When you select other “Music Source” on App, CD Play Queue will be cleared.
- The seek function will not be available.
When seek bar is not available, the bar will be displayed as *pellucidity*.
- Track name is shown as “Track ***”. (“***” is track number.)
- Album art cannot be shown during selecting song.
- During CD stop condition, once this App goes to back ground or App goes to sleep mode.
After that you play song from this App, playback will be stopped or next song will be played.
Please select songs from App and play again.
- To use the function, please also update
 - OTTAVA™ SC-C500: ver1.19 or later.
 - SU-C550: ver1.18 or later.

In detail, please refer to the following support page.

<http://www.technics.com/support/firmware/>

- To use this function by OTTAVA™ f SC-C70, please use Technics Music App: ver1.9.0 or later.





Change selector of Technics Products

You can change selector of Technics Product.

Select the Technics product as “DLNA” on Speaker System, and tap ”Technics Player”.

After that, selectors of Technics product will be displayed.

When you tap the selector, the selector of Technics product will be changed.

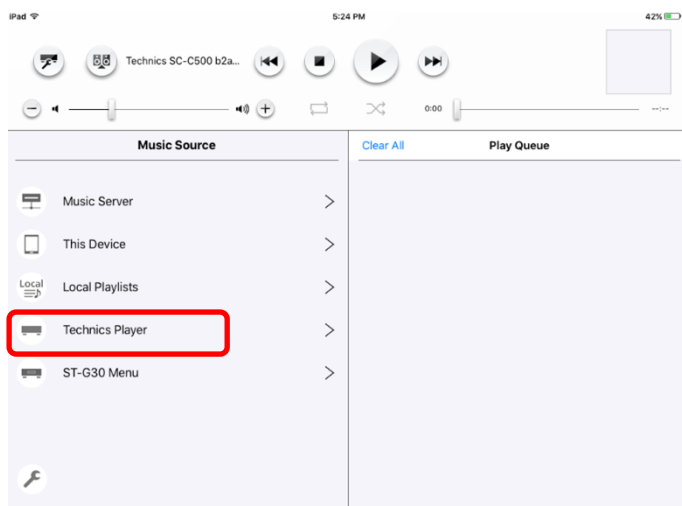
Note:

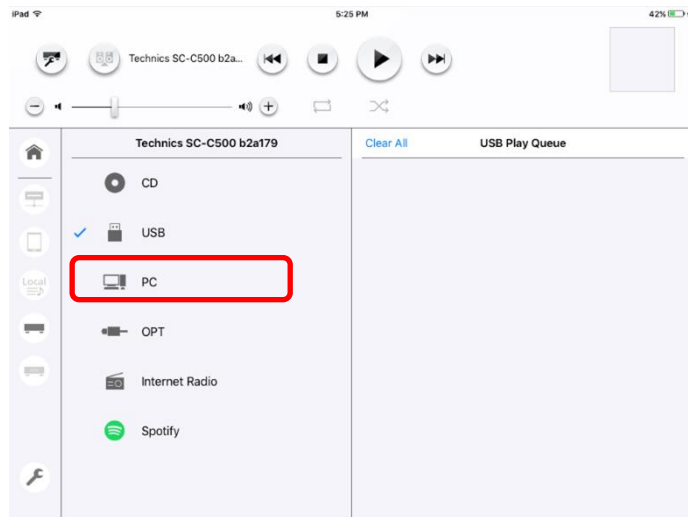
- To use this function, please also update
 - SU-G30:ver1.12 or later.
 - ST-C700D:ver1.00 or later.
 - OTTAVA™ SC-C500: ver1.19 or later.
 - SU-C550:ver1.18 or later.

In detail, please refer to the following support page.

<http://www.technics.com/support/firmware/>

- To use this function by OTTAVA™ f SC-C70, please use Technics Music App: ver1.9.0 or later.
- When you used as USB-DAC with ST-G30, Select “PC” selector of Technics product.
After that, please operate by following “Technics Music App User Guide(ST-G30 control guide)”.

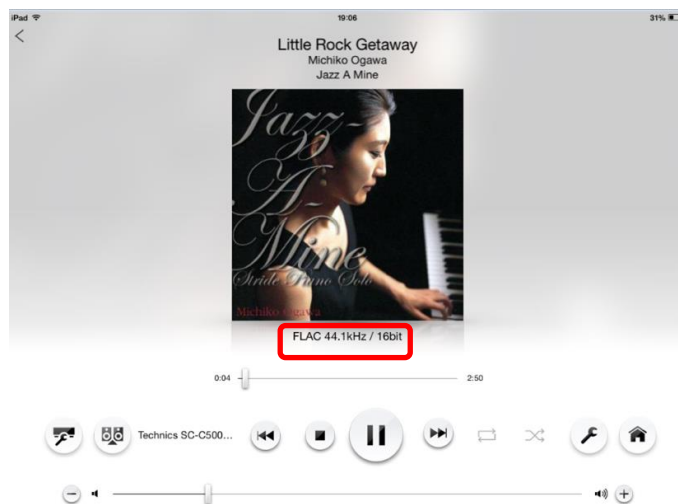
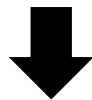
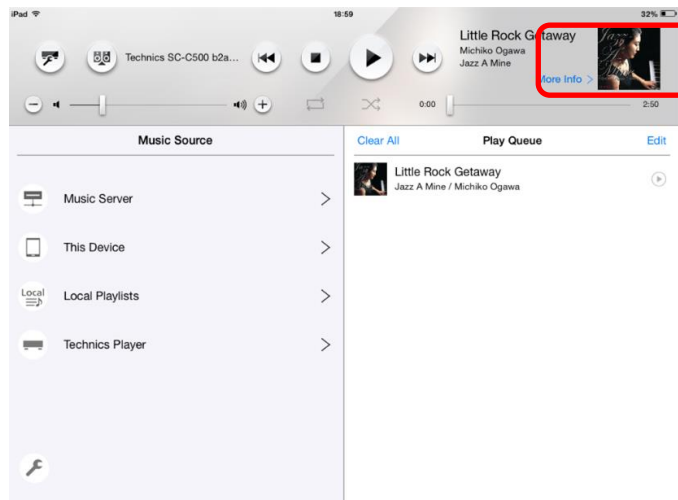




Switch to playback screen

On a tablet, you can go to playback screen by tapping jacket or “More Info”

On a smartphone, you can go to playback screen by tapping "Now Playing".



Note:

On the playback screen, you can see codec information while the song is playing.

However, there is possibility that you will not be able to see this information depending on NAS or the codec information for the song.

Make Local Playlist

You can save Play Queue as Local Playlist.

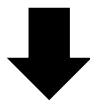
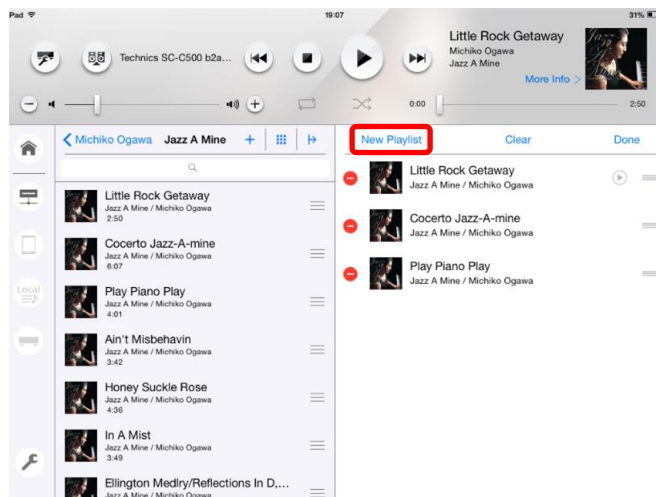
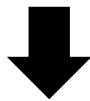
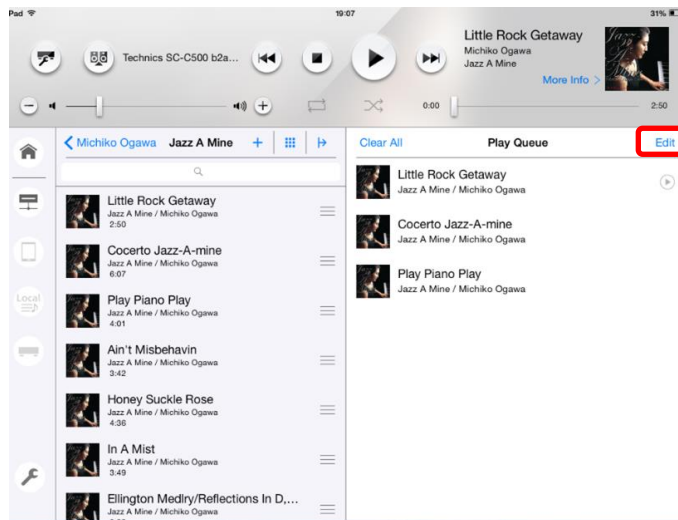
First, tap the "Edit" button.

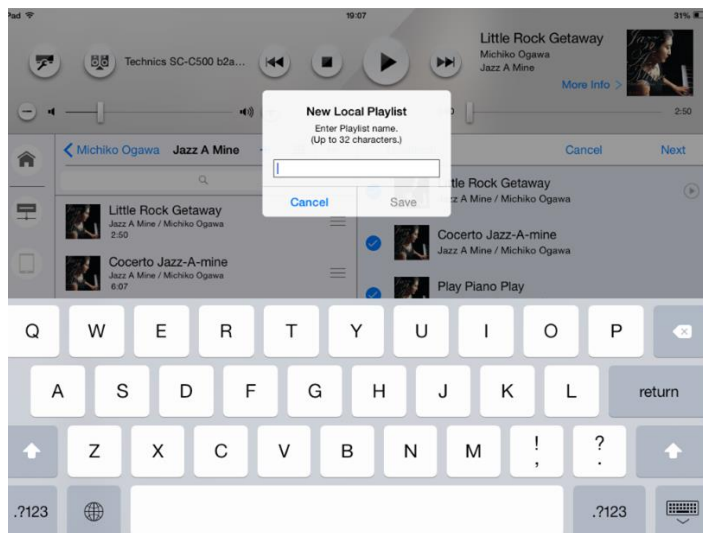
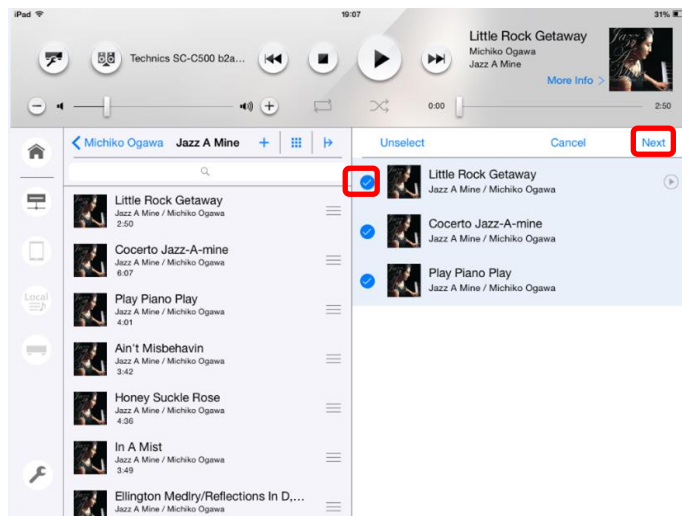
Next, tap "New Playlist" and select the songs to add to the Playlist, then tap "Next".

Finally, you can input the name of the Playlist.

Note:

When you select "USB", you cannot make a Local Playlist.





Clear songs from Play Queue

When you want to clear songs from the Play Queue, you can clear them using this App.

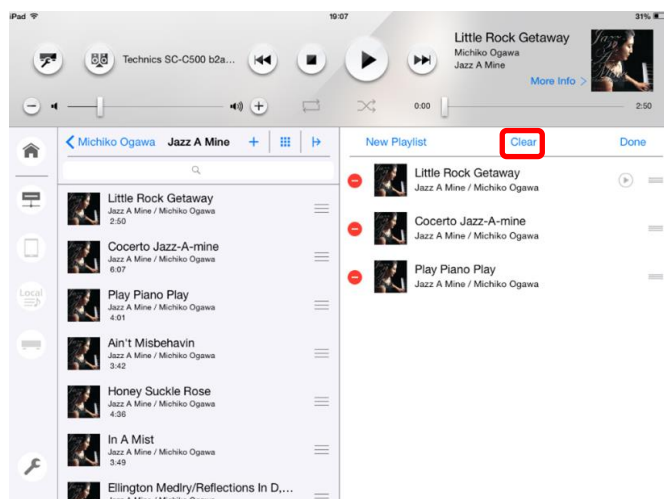
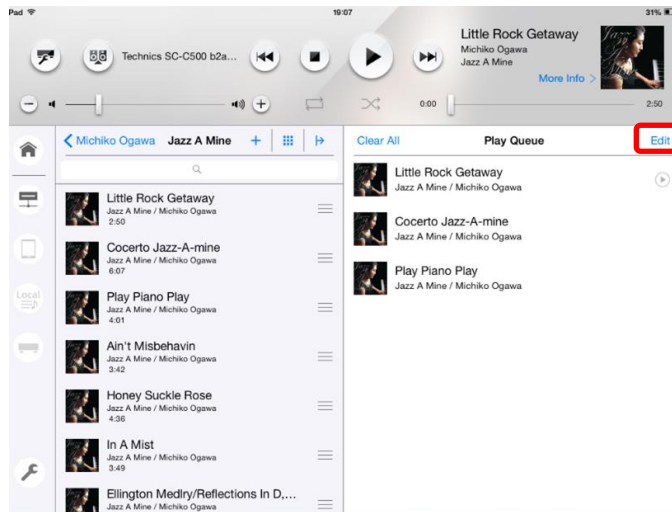
First, tap "Edit" button.

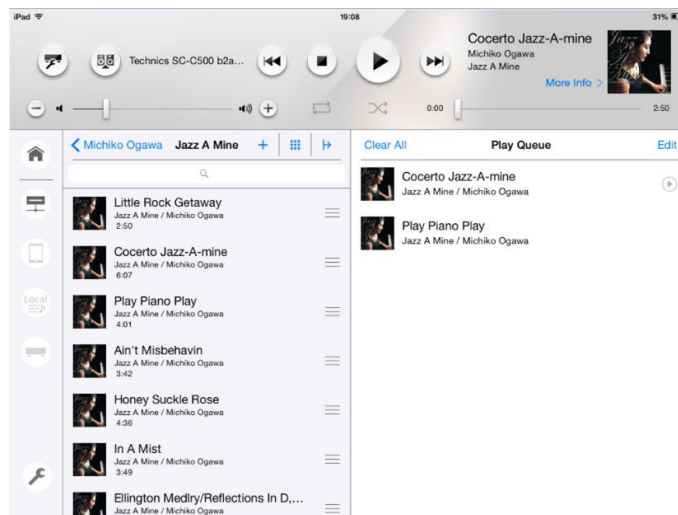
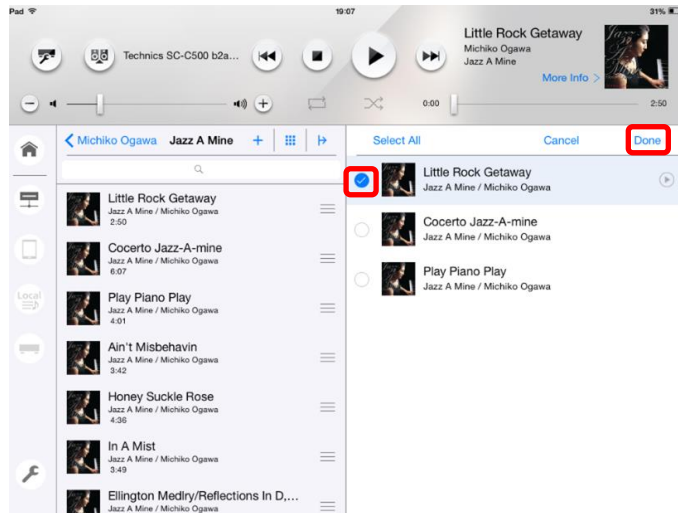
Next, "Clear", and select the songs to clear from Play Queue.

(You can select several songs.)

Finally, tap “Done”.

(When you clear songs from a Local Playlist, tap “Save”.)





Add songs to Play Queue

When you want to add several songs to Play Queue, add them using this App.

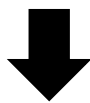
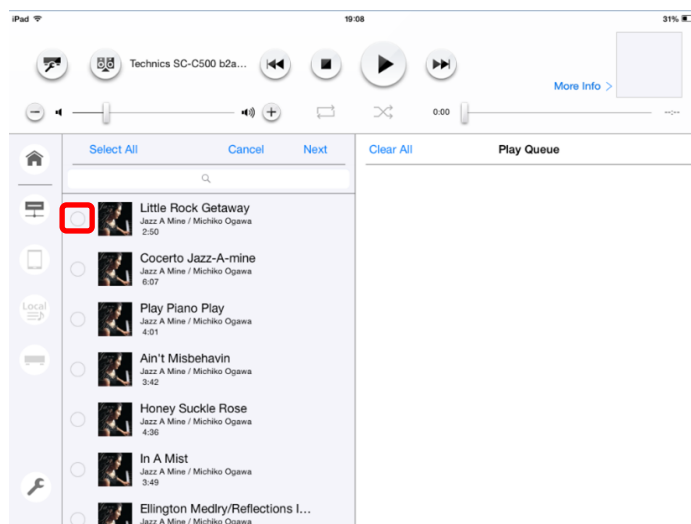
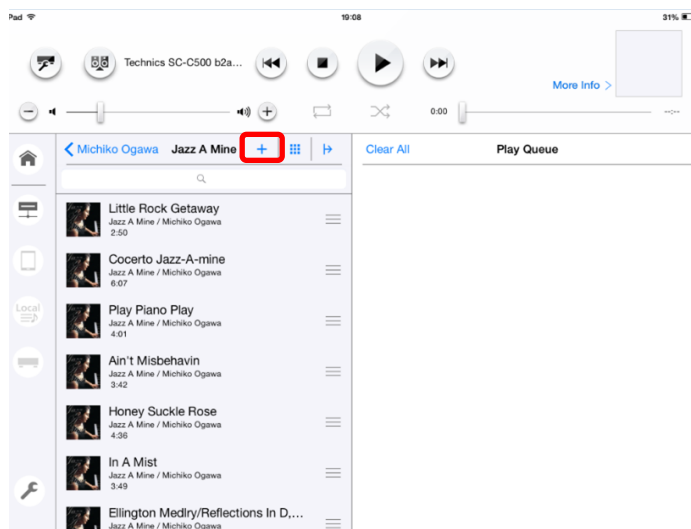
First, tap "+" button.

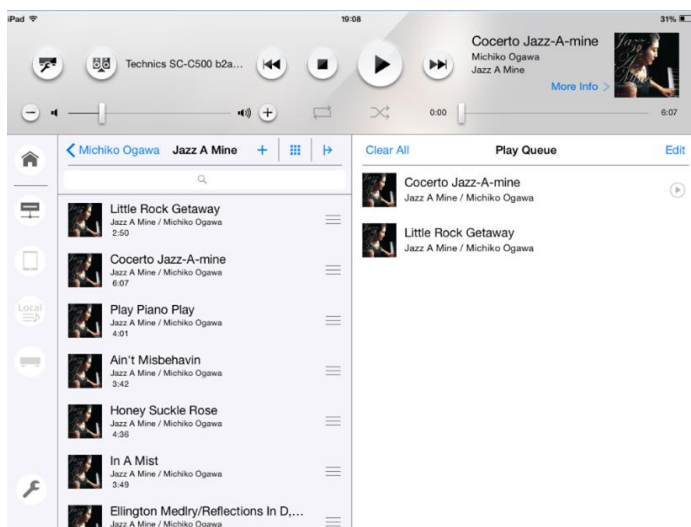
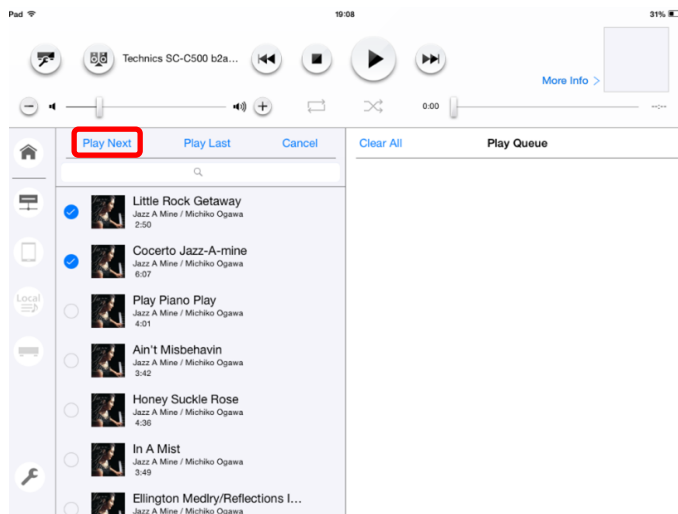
Next, select the songs to add to Play Queue.

(You can select several songs.)

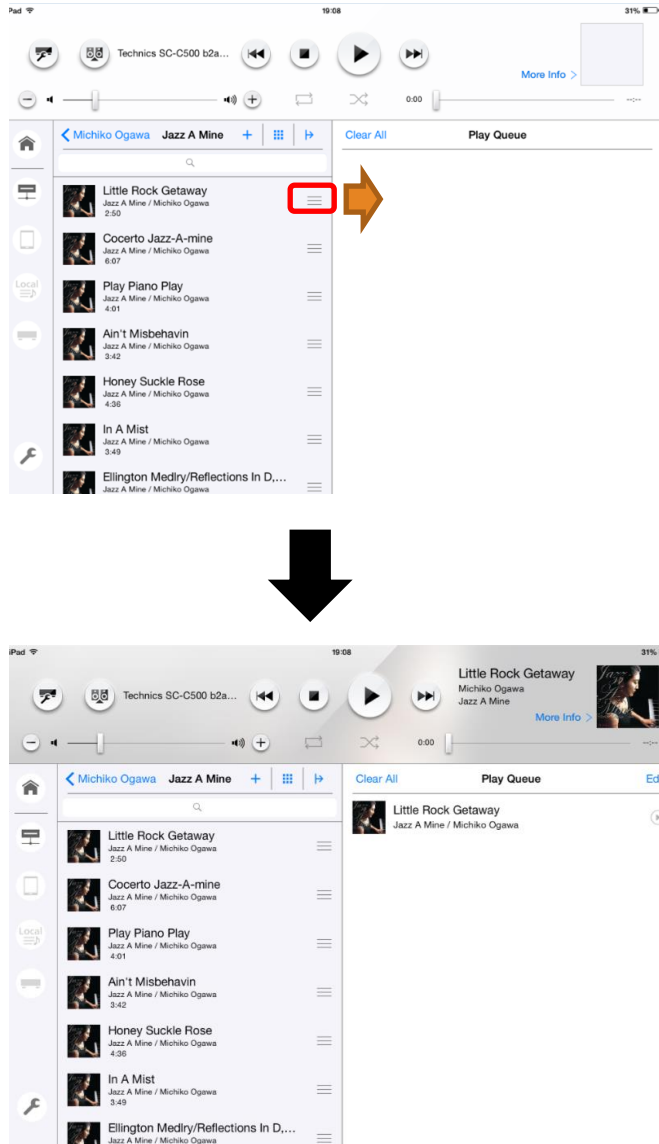
Now, tap "Next". Finally, select "Play Next" or "Play Last".

(When you add songs to a Local Playlist, you also need to tap "Save".)





When you use a Tablet, you can also add songs to Play Queue by another way.
First, tap the icon on the right side of song that you want to add to Play Queue.
Next, move the song to Play Queue by dragging and dropping this icon.
(When you add songs to a Local Playlist, you also need to tap “Save”.)



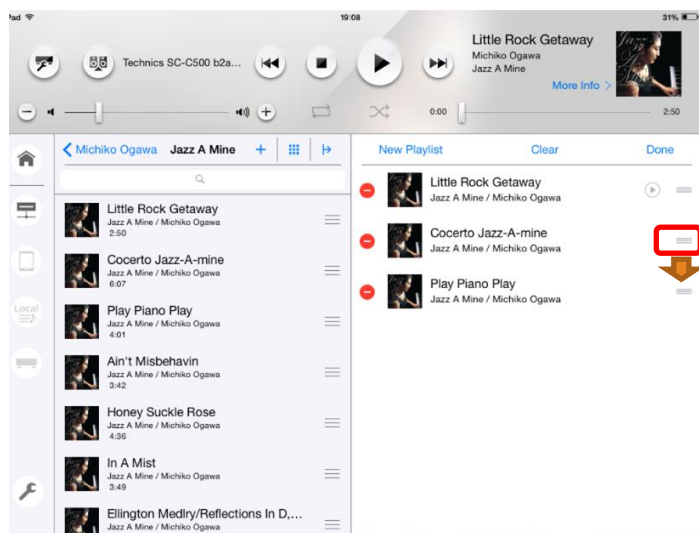
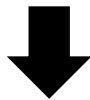
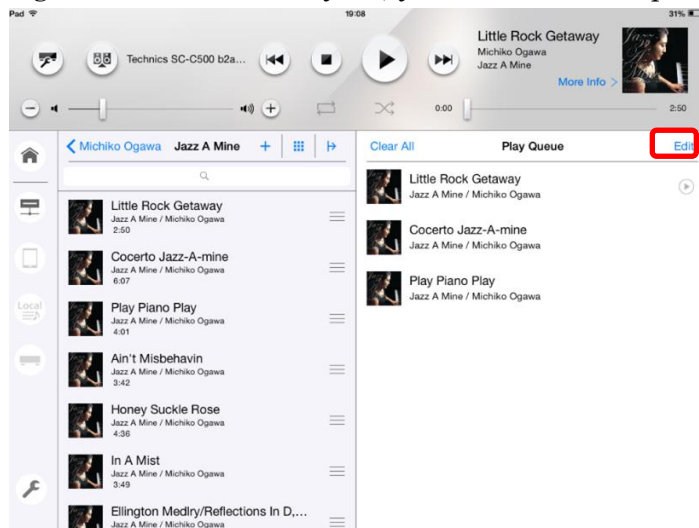
Change song order in Play Queue

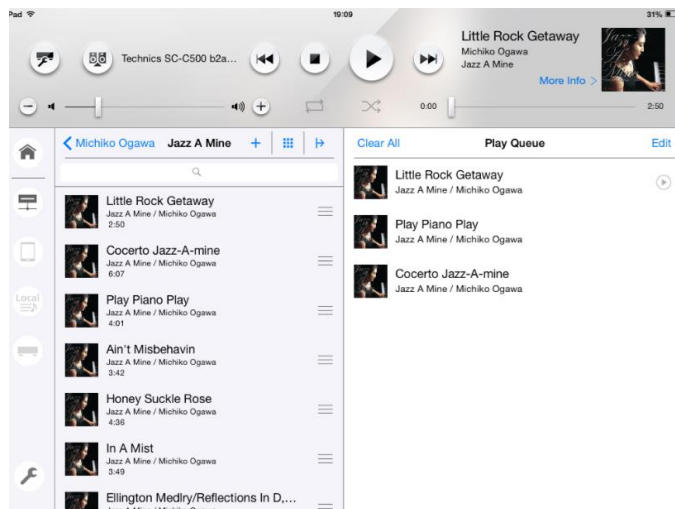
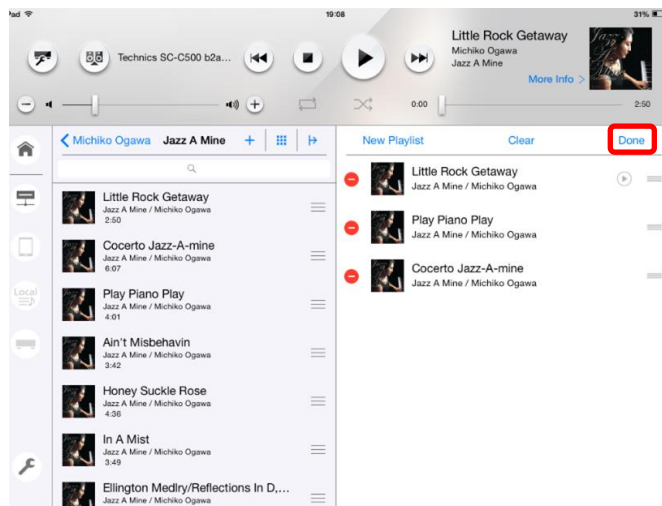
When you want to change the song order in Play Queue, you can change the order using this App. First, tap "Edit" button.

Next, tap the icon on the right side of song that you want to change order in Play Queue, Move the song to the position, you want, by dragging and dropping this icon.

Finally, tap "Done".

(When you change song order in a Local Playlist, you also need to tap "Save".)





Control Internet Radio(vTuner) on Technics product

You can control Internet Radio(vTuner) on Technics products

(SU-G30/ST-C700D/OTTAVA™ SC-C500/SU-C550/ OTTAVA™ f SC-C70) by App.

Internet Radio is an audio broadcasting service transmitted via the Internet.

vTuner is a free online content service to listen to the many Internet Radio stations over the world.

To use these function, please also update

- SU-G30: ver1.10 or later.
- ST-C700D: ver1.00 or later.
- OTTAVA™ SC-C500: ver1.15 or later.
- SU-C550: ver1.14 or later.

In detail, please refer to the following support page.

<http://www.technics.com/support/firmware/>

And Technics Music App is also needed to update more than ver1.4.0.

For ST-C700D, Technics Music App is also needed to update more than ver1.6.0.

To use this function by OTTAVA™ f SC-C70, please use Technics Music App: ver1.9.0 or later.

Select station

You select the Technics product as “DLNA” on Speaker System.

(→Please refer to page4: “Switch a Speaker System”)

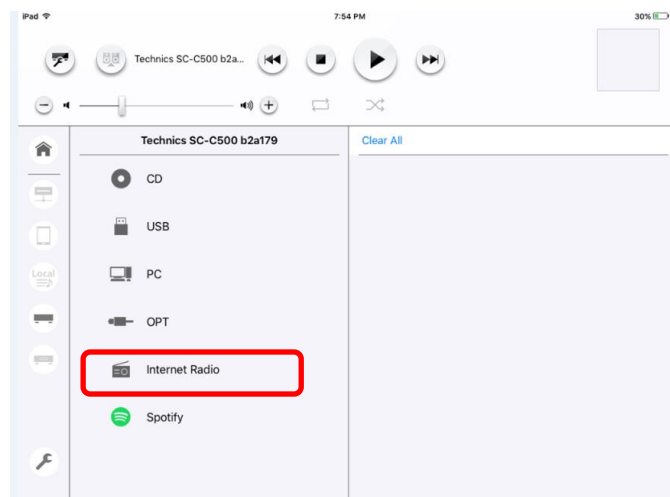
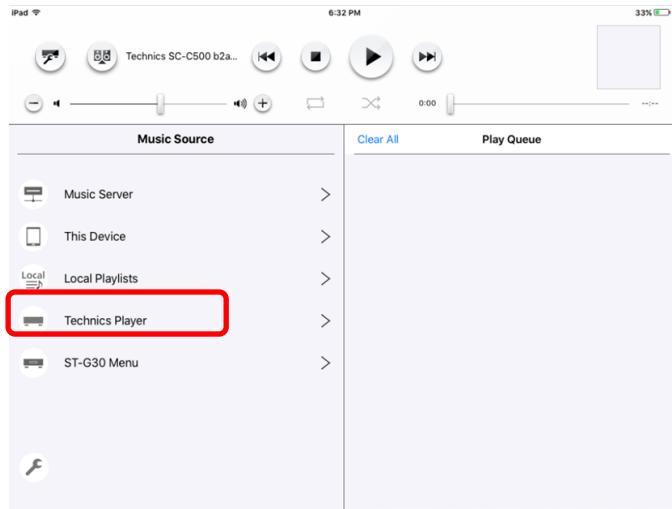
After that, tap “Technics Player”, and select “Internet Radio”.

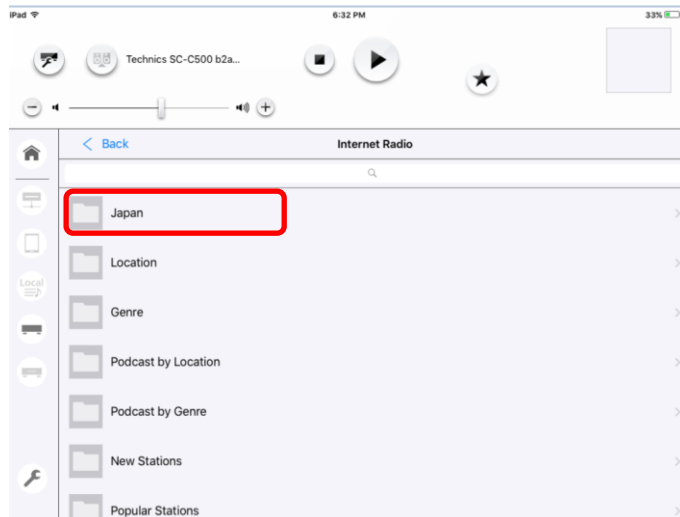
(During playback, App displays “Playback of song will be stopped. Continue?”.

So tap “OK”).

According to the genre, region, etc, you can select a station.

After select it, App displays pop up screen (“Play Now”). When you tap it, playback starts.





Note:

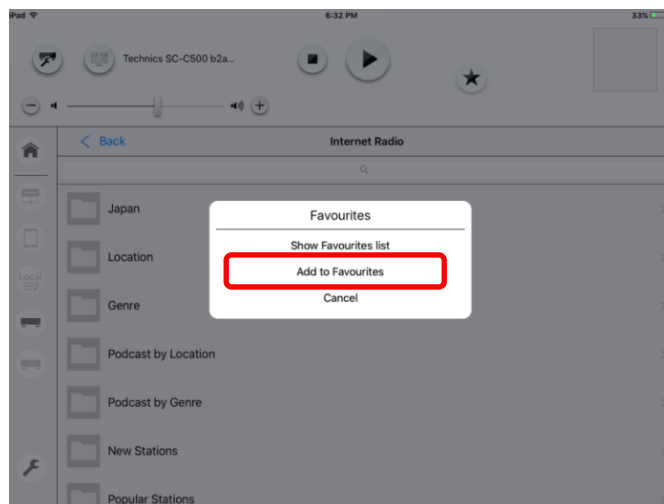
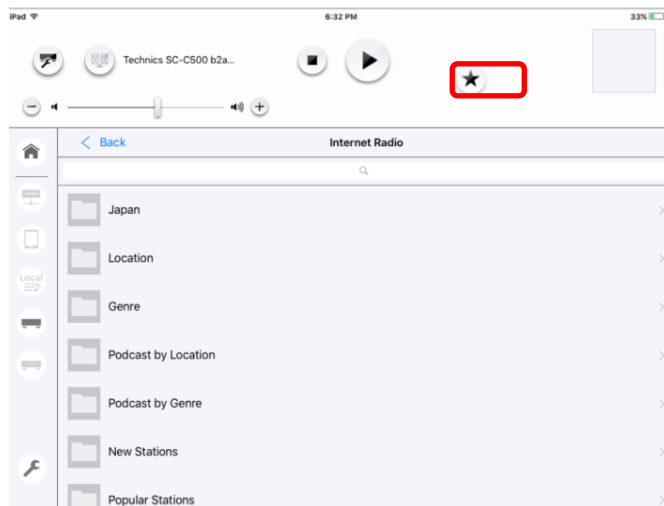
- To use vTuner ,make sure that your network is connected to the Internet.
- The Internet radio stations, genre, region,etc. on this App are edited and managed by vTuner.
- The podcasts can also be played back.
- The stations can be found by search function from App.
But not stations but folders may be displayed after search.
Folder cannot be played back.
- The station that does not broadcast cannot be played back.
- The Internet Radio service may be suspended or be otherwise unavailable without notice.
- Internet radio may not be played back properly depending on the network condition.
- The station cannot be paused(Only podcasts can be paused.)
- When station is stopped to playback, station informations will be cleared on App.
Select station again.
- You cannot select more than under 8 layered stations.
- If no station is registered to the favourite list, “Empty” is displayed. Add a station to the list.
In detail, please refer to the OI manual of Technics product.
- If “No shows available” is displayed, there are no stations. Select another station.
- When “Login Error” is displayed, the connection to vTuner has failed.
 - Confirm the network connection and settings.
 - Select a different audio source and then select Internet Radio again.

Add to Favourites

During playback, tap ★ on this App.

App displays pop up screen(“ Show Favourites list” ,“Add to Favourites”), then tap “Add to Favourites”.

“Added to Favourites” is displayed after registering.



Note:

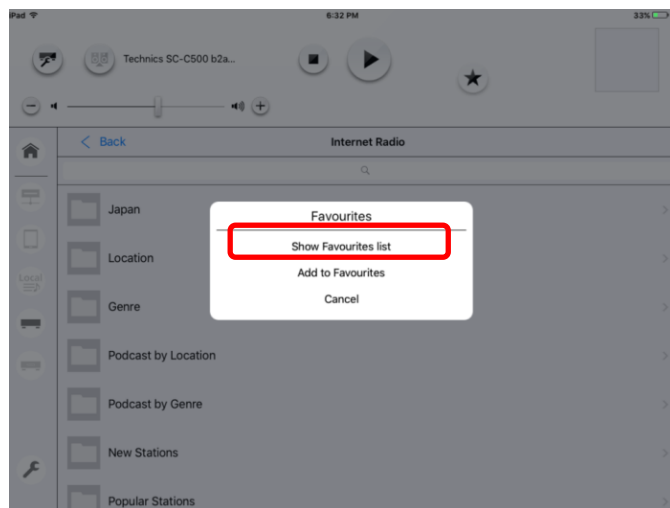
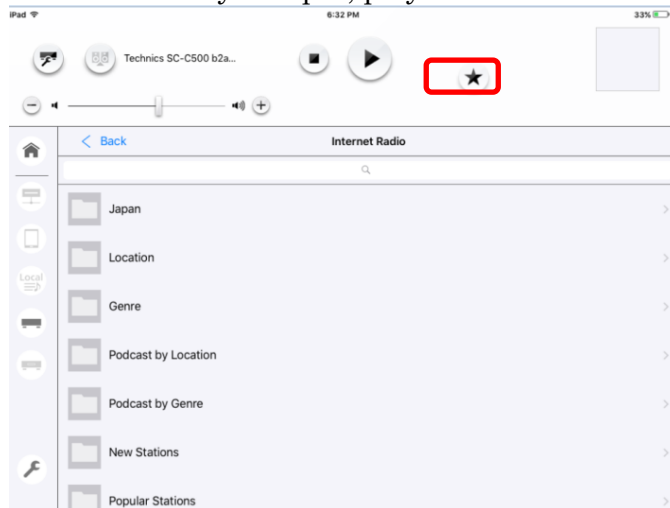
- This Favourites list is synchronized with the Technics product in connection.
- You can register up to 50 stations. If a 51st station is added, “Maximum number of Favourites list reached” is displayed.
Delete the stations from the Favourites list
- You cannot add the already registered station.(“Already exists in Favourites” is displayed.)

Show Favourites list

Tap "★" on this App.

App displays pop up screen(" Show Favourites list" , "Add to Favourites"), then tap "Show Favourites list".

After that, select a station. When you tap it, playback starts.



Note:

- During playback, playback will be stopped when you tap "Show Favourites list"
- During playback the station in Favourites list, playback will be stopped when you exit from Favourites list.
- If no station is registered to the Favourites list, no stations are displayed.
Add a station to the list.

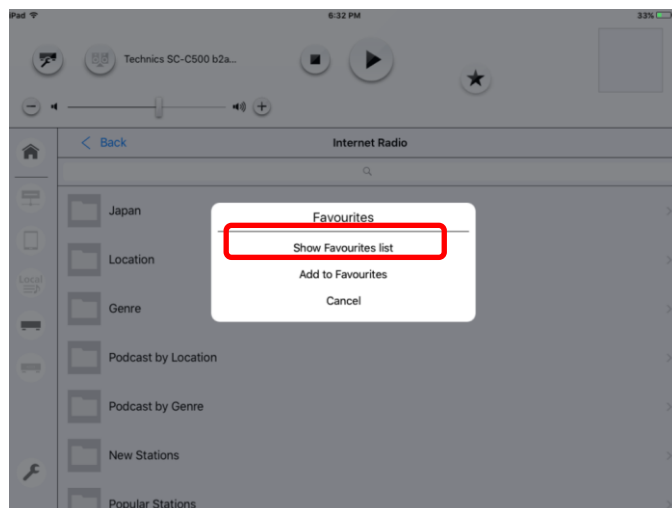
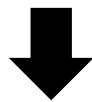
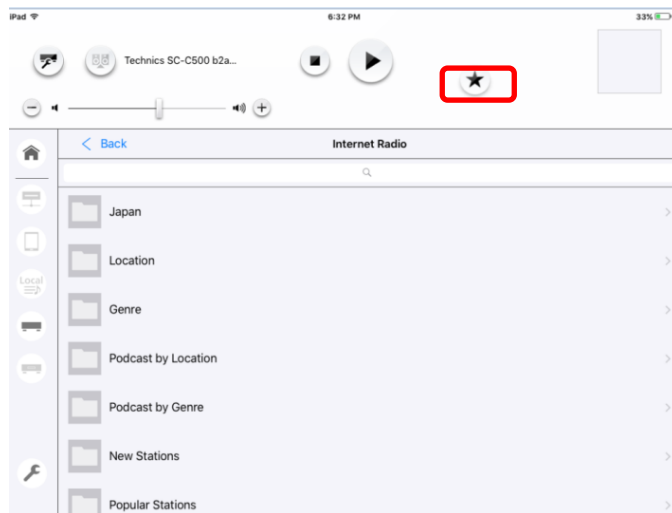
Delete Favourites

Tap "★" on this App.

App displays pop up screen(" Show Favourites list" , "Add to Favourites"), then tap "Show Favourites list".

After that, tap a station that you want to delete for a while.

App displays pop up screen("Delete?"), select "OK".



Note:

- When you want to delete all stations registered to the Favourites list, select "Delete all?"

Using Spotify

You can start Spotify App from this App.

And Technics products(SU-G30/ST-C700D/OTTAVA™ SC-C500/SU-C550/ OTTAVA™ f SC-C70) is compatible with the online music service (Spotify).

You will need Spotify Premium. For details, visit the following website.

<http://www.spotify.com/connect/>

To use these function, please also update

- SU-G30:ver1.10 or later.
- ST-C700D:ver1.00 or later.
- OTTAVA™ SC-C500: ver1.15 or later.
- SU-C550:ver1.14 or later.

In detail, please refer to the following support page.

<http://www.technics.com/support/firmware/>

And Technics Music App is also needed to update more than ver1.4.0.

For ST-C700D, Technics Music App is also needed to update more than ver1.6.0.

To use this function by OTTAVA™ f SC-C70,please user Technics Music App: ver1.9.0 or later.

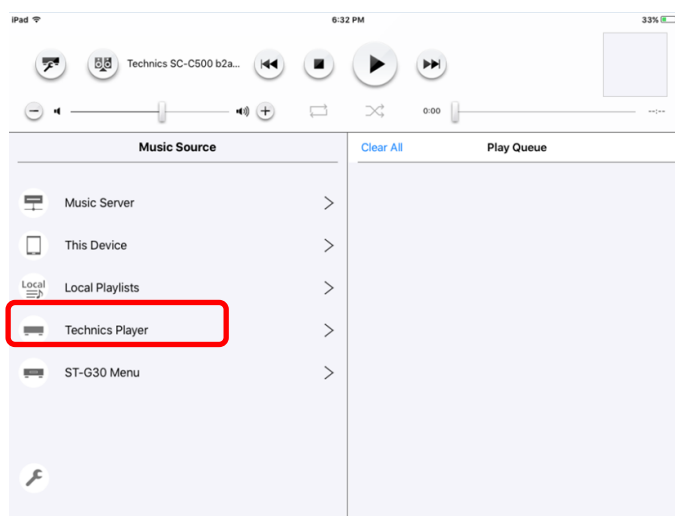
Start Spotify App

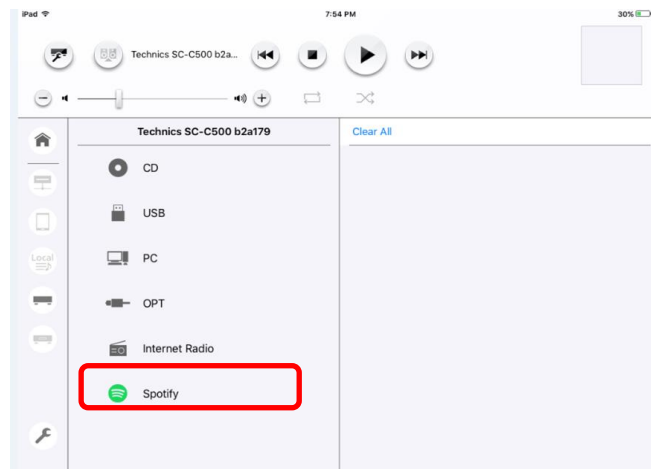
You select the Technics product as “DLNA” on Speaker System.

(→Please refer to page4: “Switch a Speaker System”)

After that, tap ”Technics Player”, and select "Spotify".

(During playback, App displays “Playback of song will be stopped.Continue?”.So tap “OK”.)





After that, start the Spotify app, and follow below step.

1. Select a song to playback.
- 2 Select the square image of the song's cover art in the bottom left of the playback screen.
- 3 Select the speaker icon
- 4 Select Technics product as the output speakers.

Note:

- Registration/subscription is required.
- Fees may apply.
- Services, icons, and specifications are subject to change.
- To use Spotify ,make sure that your network is connected to the Internet.

Using TIDAL

You can play music from the music streaming service, TIDAL on Technics products (SU-G30/ST-C700D /OTTAVA™SC-C500/SU-C550/ OTTAVA™ f SC-C70) with this App.

For details of TIDAL, visit the following web page.

<http://www.tidal.com/>

To use these function, please also update

- SU-G30:ver1.16 or later.
- ST-C700D:ver1.02 or later.
- OTTAVA™ SC-C500: ver1.27 or later.
- SU-C550:ver1.26 or later.

For details, please refer to the following support page.

<http://www.technics.com/support/firmware/>

And Technics Music App is also needed to update ver1.7.0 or later.

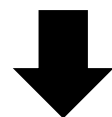
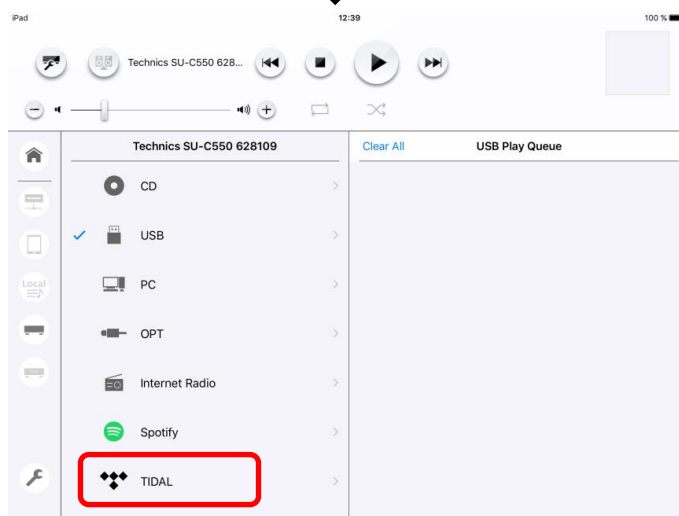
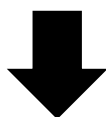
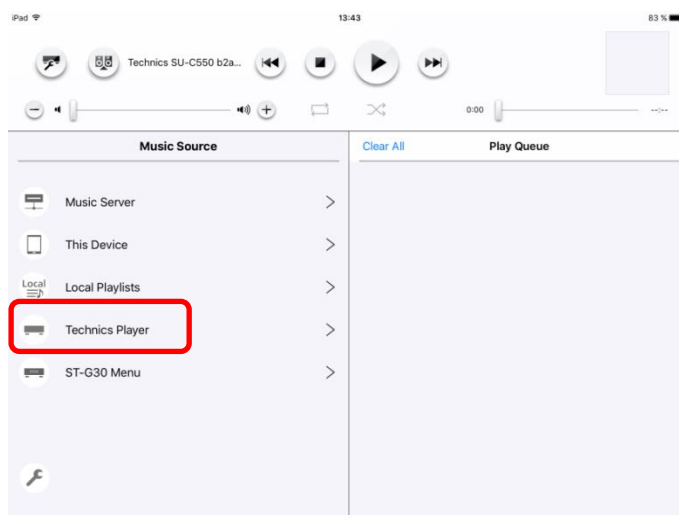
To use this function by OTTAVA™ f SC-C70,please user Technics Music App: ver1.9.0 or later.

Note:

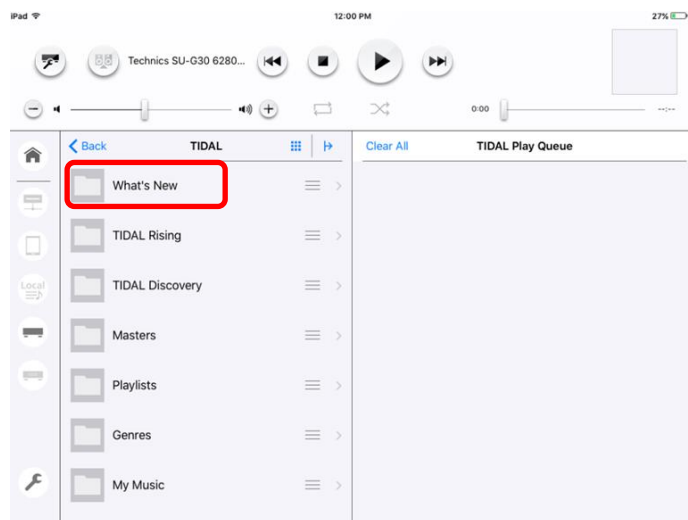
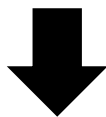
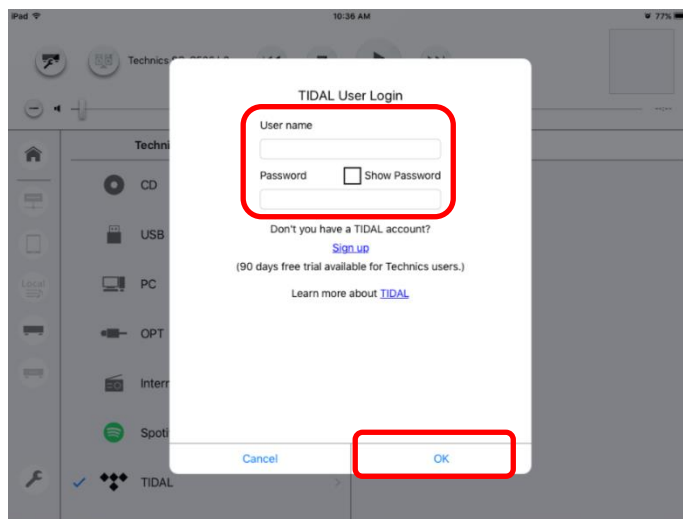
- Before using TIDAL, the account registration is required (paid service).
- To use TIDAL, make sure that your network is connected to the Internet.
- Specifications are subject to change for performance improvement.
- Depending on the country or region, playback may not be available.

Start TIDAL

You can select the Technics product as “DLNA” on Speaker System.
(→Please refer to page5:“Switch a Speaker System”)
After that, tap “Technics Player”, and select “TIDAL”.



Then, if you login to TIDAL for the first time, input User name/Password.
And tap “OK”.



Select songs on TIDAL

Some folders in TIDAL such as “What's New” / “TIDAL Rising” etc. are displayed and you can select the song in them.

For example, tap as follows. “What's New” → “Playlists” → “New”

After tapping “New”, you can select some playlists.

If you tap a playlist, you can select song in the playlist.

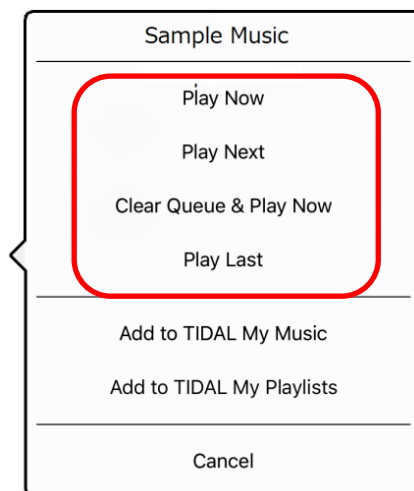
To select a song which you want to playback, tap a track.

And pop up window is displayed. You can select the method of play.

- “Play Now”: Play the selected song
- “Play Next”: After finishing the current song, play the selection as the next song
- “Clear Queue & Play Now”: Clear the songs in TIDAL Play Queue, and then, play the selected song
- “Play Last”: Play as the last song in TIDAL Play Queue

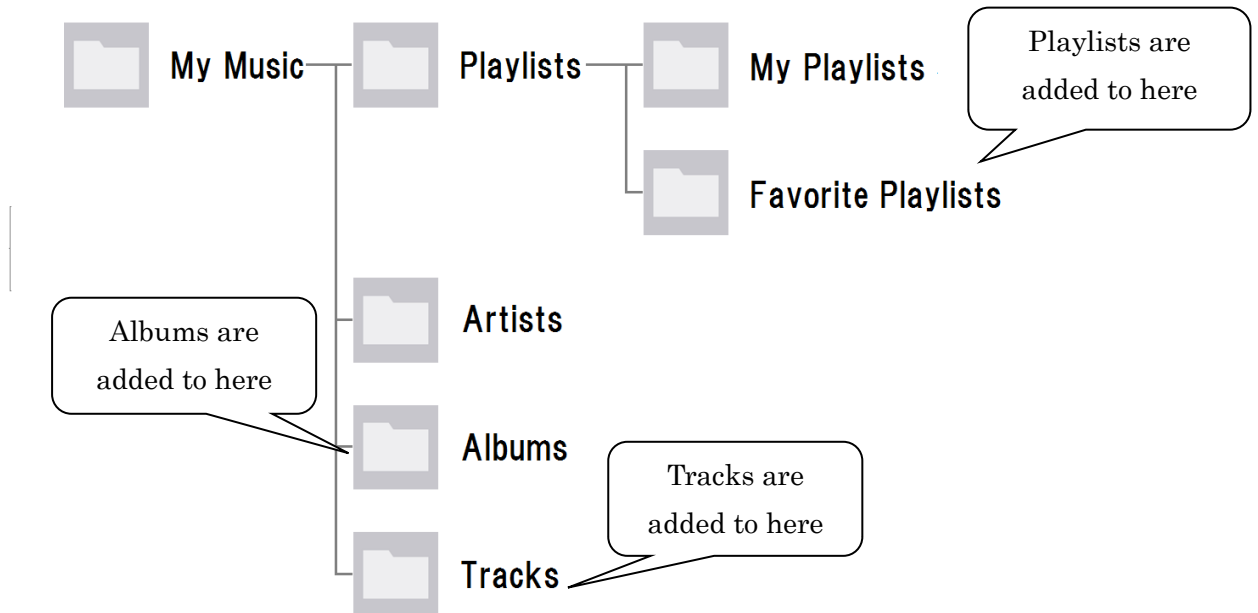
Play songs are registered in TIDAL Play Queue,

And you can play by tapping the song in TIDAL Play Queue.



When you select “All songs”, you can also select the method of play same as playback songs.

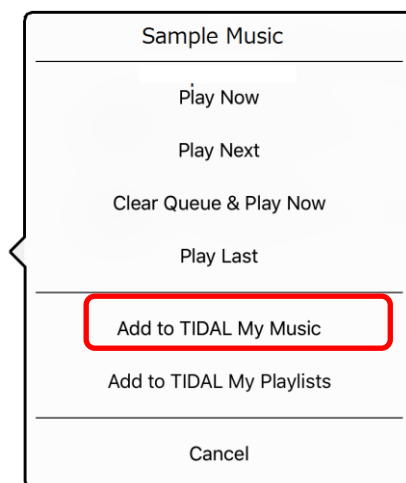
Add to My Music



You can add your favorite contents (playlists, albums, tracks) to “My Music” in TIDAL.

- Tap a track and tap "Add to TIDAL My Music".

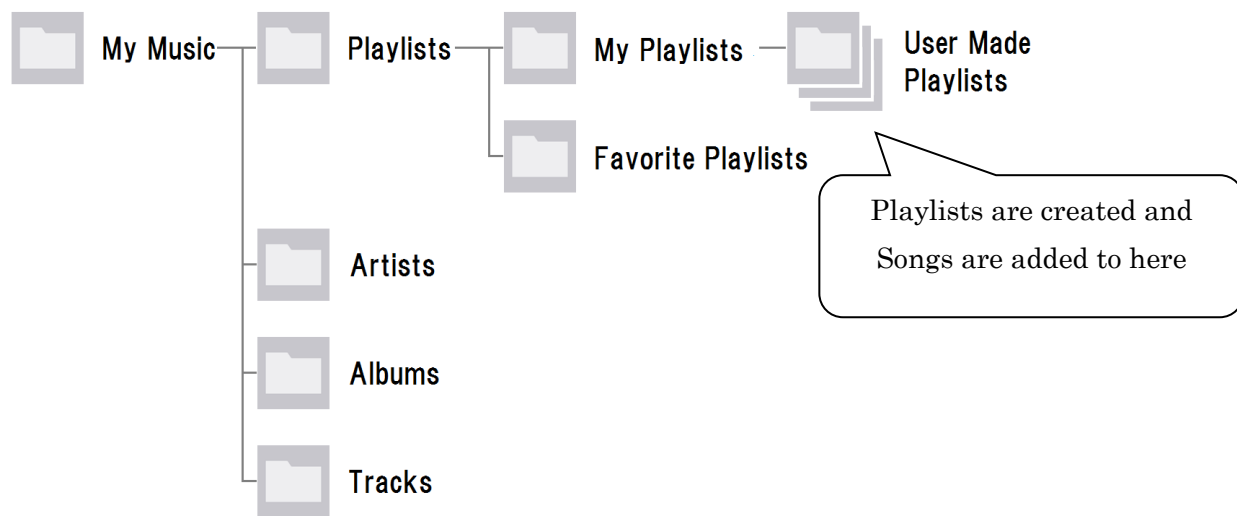
Tracks are added to My Music → Tracks.



- Tap “All songs” under “Playlists” and tap "Add to TIDAL My Music".
Playlists are added to My Music → Playlists → Favorite Playlists.
- Tap “All songs” under “Albums” and tap "Add to TIDAL My Music".
Albums are added to My Music → Albums.

When you playback these contents, select song from these folder.

Add to My Playlists



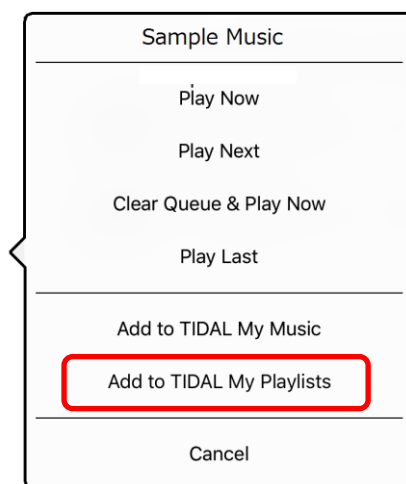
You can add songs to new playlist or current playlist in “My Playlists”.

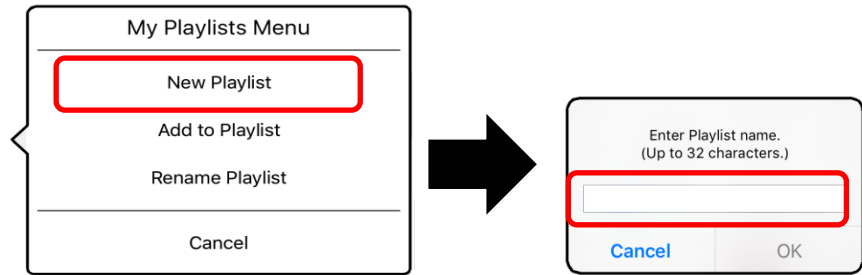
● New Playlist

You can create a new playlist in "My Playlists" and add songs to the playlists.

To select a song which you want to add, tap a track. Tap "Add to TIDAL My Playlists". To add all songs in a playlist or an album, select "All Songs", and tap "Add to TIDAL My Playlists".

Next, tap "New Playlist". After that input the name of the playlist.





Contents are classified by type and added to the folder under "My Playlists" in TIDAL.
Playlists added to My Music → Playlists → My Playlists→Use Made Playlists

When you playback these contents, select song from these folder.

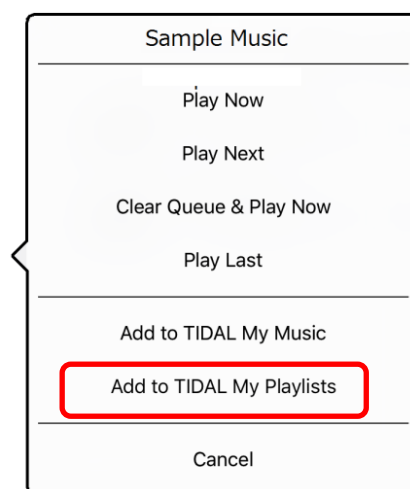
● Current playlist

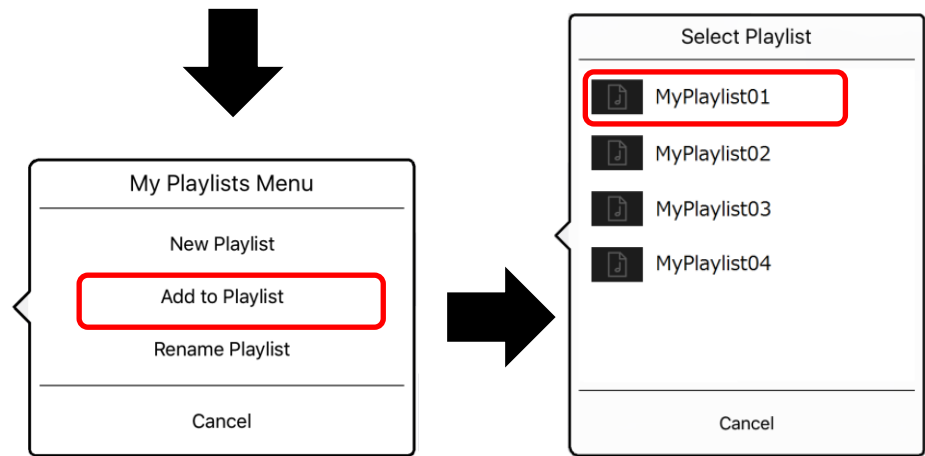
You can add songs to current playlist in "My Playlists".

To select a song which you want to add, tap a track.
Tap "Add to TIDAL My Playlists".

To add all songs in a playlist or an album, select "All Songs", and tap
"Add to TIDAL My Playlists"

Next, tap "Add to Playlist" after that select a playlist that you want to add songs.



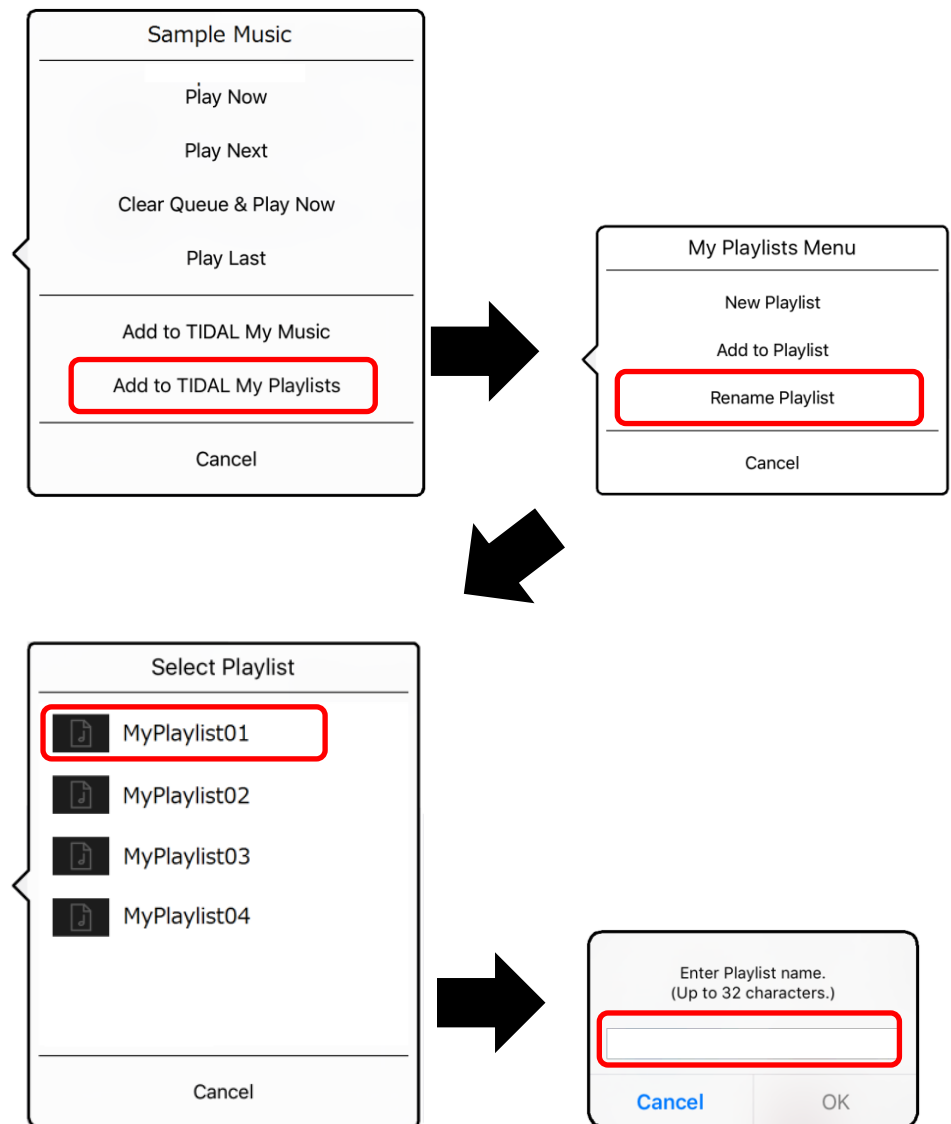


Rename My Playlist

You can rename playlist which is created in “My Playlists”.

After select “My Music” → “Playlists” → “My Playlists”,
select songs in the playlist that you want to rename.

After that, tap "Add to TIDAL My Playlists", and tap “Rename Playlist”.
Then you can input the name of the playlist.



Delete songs in My Music / My Playlist

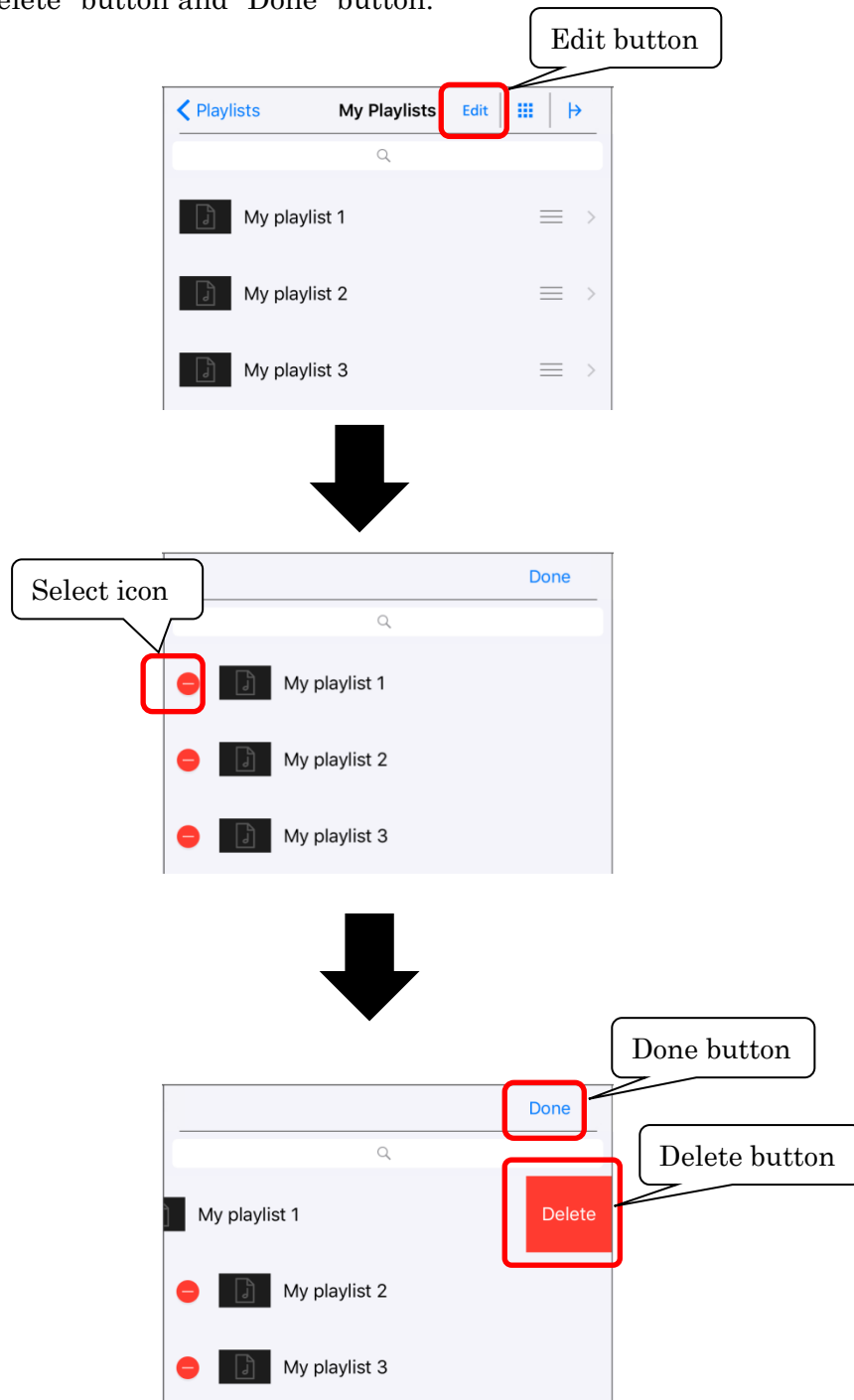
You can delete contents(songs/playlists) in My Music.

Below example is that in case of delete songs in My Playlist.

After display contents which you want to delete, tap the “Edit” button.

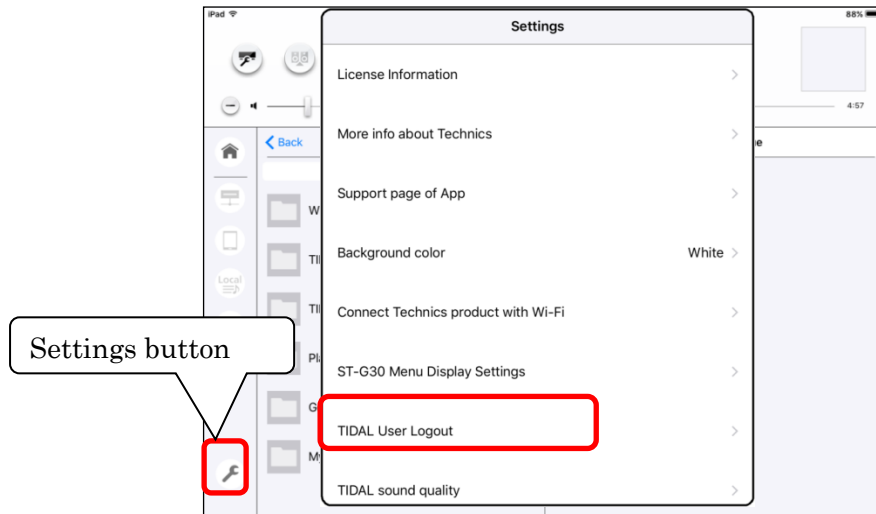
Next, tap “Select icon” that you want to delete.

Finally, tap “Delete” button and “Done” button.



TIDAL User Logout

When you want to logout from TIDAL, tap “Settings button” and select “TIDAL User Logout”. Then tap “OK”.



Note

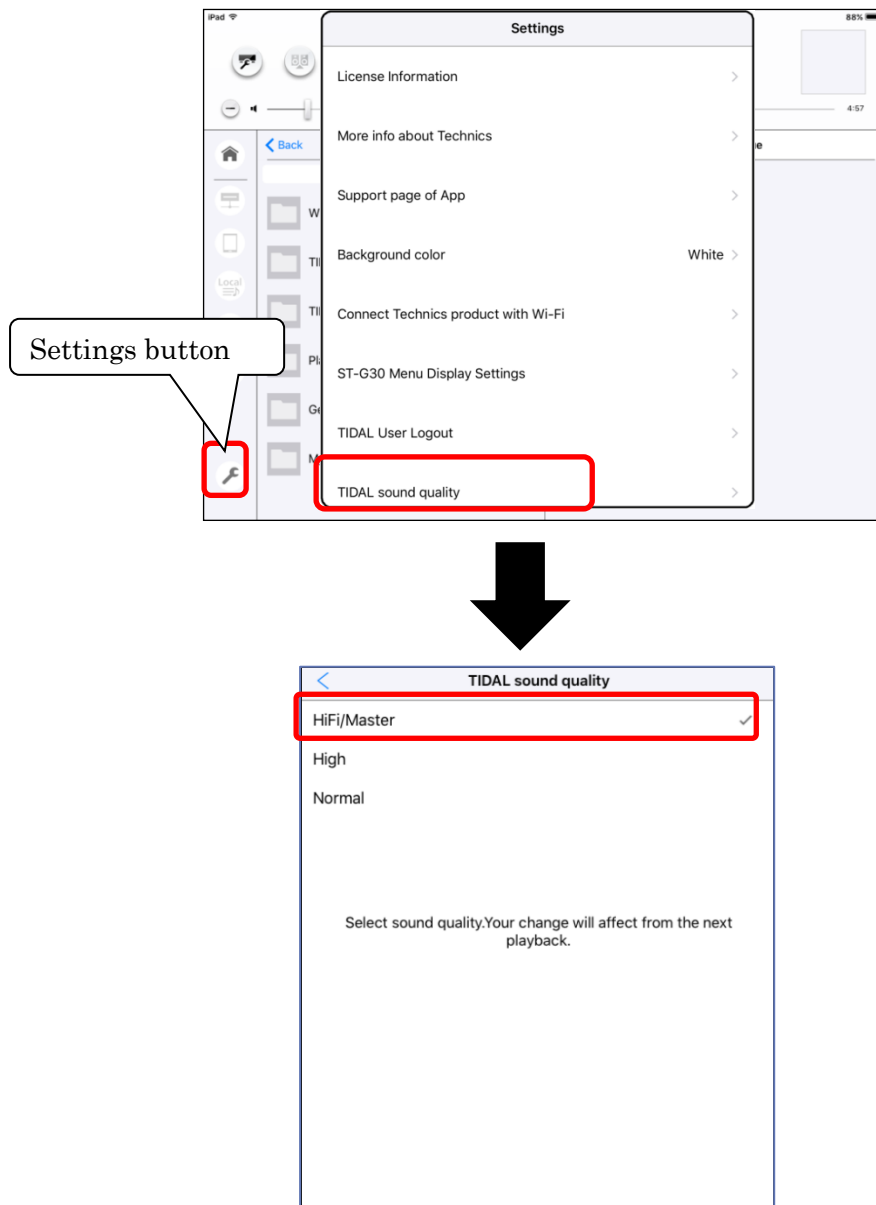
- "TIDAL User Logout" is displayed only when you select "TIDAL" in "Technics Player"
- After Logout, TIDAL Play Queue is cleared.

TIDAL sound quality

You can change Sound Quality to playback songs in TIDAL.
Tap “Settings button” and select “TIDAL sound quality.”

Then select below settings.

- HiFi/Master : FLAC 44.1kHz/16bit (※or Master quality if available)
- High : AAC 320 kbps
- Normal : HE -AAC v196 kbps (AAC+)



Note

※ Only available TIDAL HiFi membership

- Please change the TIDAL sound quality during stop the playback of TIDAL.
- "TIDAL sound quality" is displayed only when you select “TIDAL” in “Technics Player”.

TIDAL Masters support

You can play songs in Master quality of TIDAL on Technics products (SU-G30/ST-C700D) with this App.

To use this function, please use Technics Music App ver1.8.2 or later.

Also, please update the firmware.

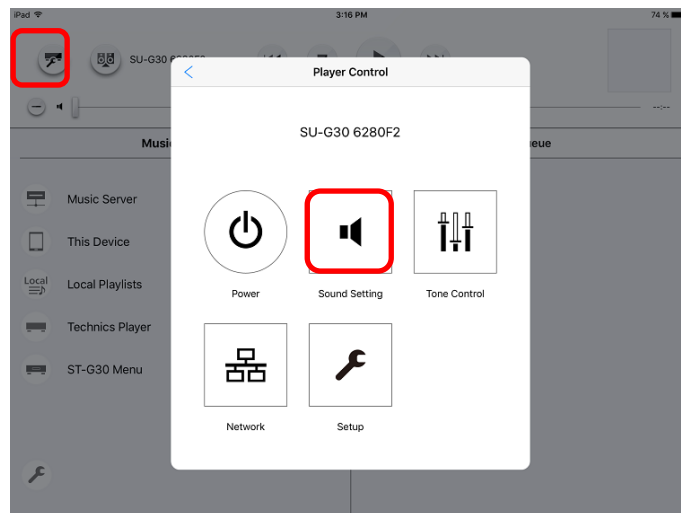
- SU-G30: ver1.19 or later.
- ST-C700D: ver1.05 or later.

For details, please refer to the following support page.

<http://www.technics.com/support/firmware/>

Operating procedure

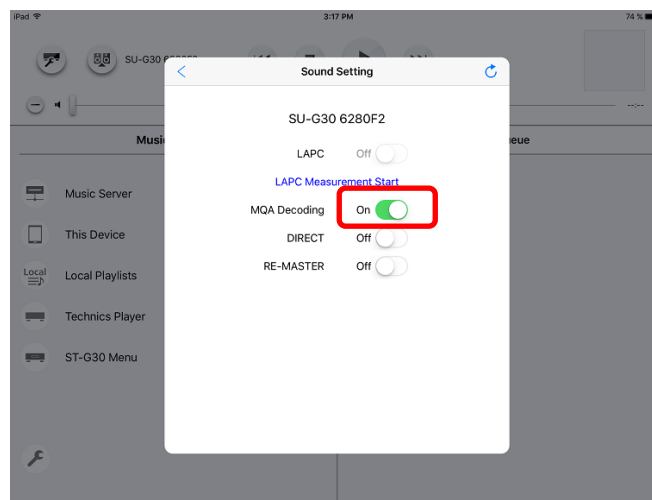
1. First, tap Player Control button, and next tap Sound Setting button,
Then the Sound Setting screen will be displayed.



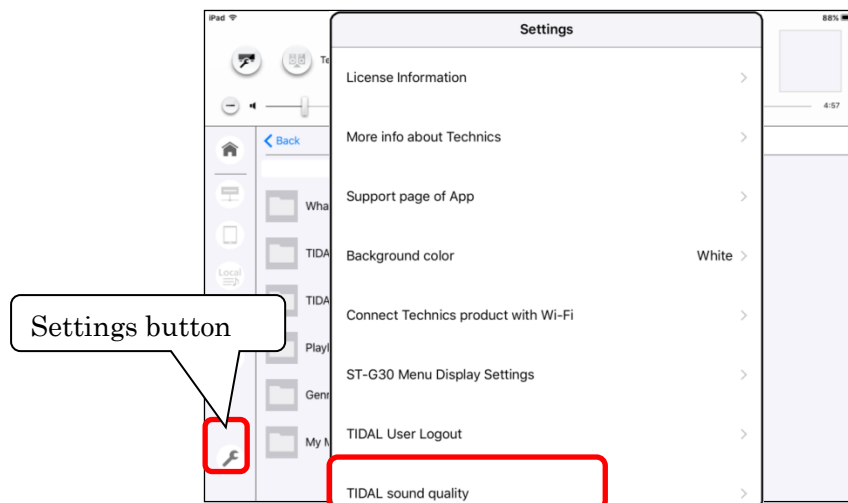
2. Change “MQA Decoding”

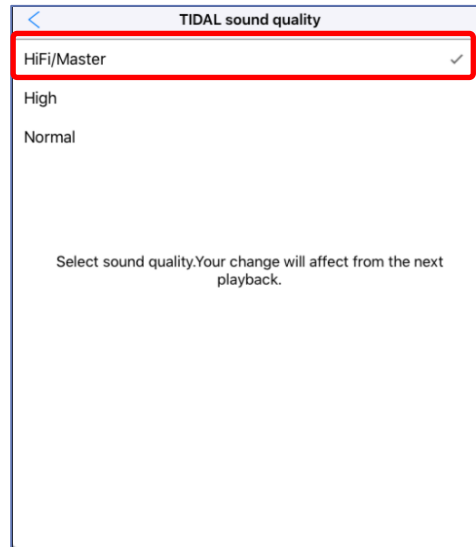
To play songs in Master quality, set “MQA Decoding” to “On”.

- When the MQA Decoding display is "On", the MQA decoding function of Technics product will be set to "On".
- When MQA decoding function is "On", the function of DIRECT / RE-MASTER of Technics product will be set to "Off".



3. Select "HiFi/Master" in "TIDAL sound quality"

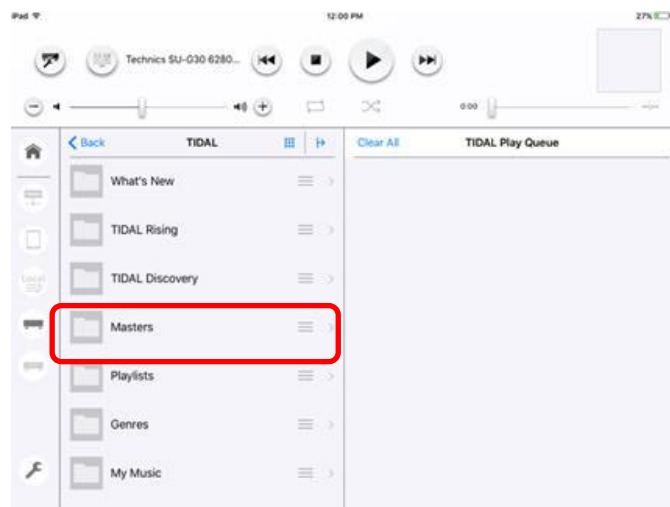




4. Select “Masters” on TIDAL

After tapping “Masters”, you can select Albums or Playlists.

If you tap an Albums or Playlist, you can select song in Master quality. And pop up window is displayed. You can select the method of play.



Note

- Set the MQA decoding function to "Off" when playing song in TIDAL other than TIDAL Masters.
- About MQA, refer to "MQA Technology support".

MQA Technology support

Technics product includes the MQA (Master Quality Authenticated) technology, which enables playback of MQA audio files, delivering the sound of the original master recording.

To use this function, please use Technics Music App ver1.8.1 or more later.

Also, please update the firmware.

- SU-G30: ver1.17 or more later.
- ST-C700D: ver1.03 or more later.

For details, please refer to the following support page.

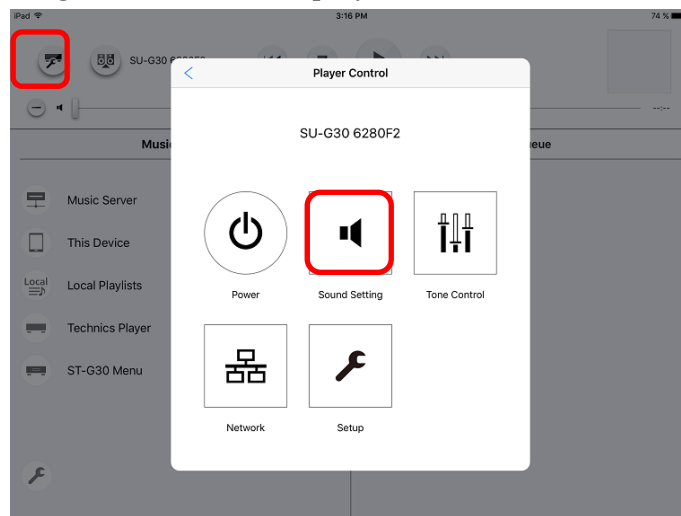
<http://www.technics.com/support/firmware/>

An MQA file needs to be decoded to deliver the master quality audio.

Switch the MQA decoding function to “On” or ”Off” in the following steps.

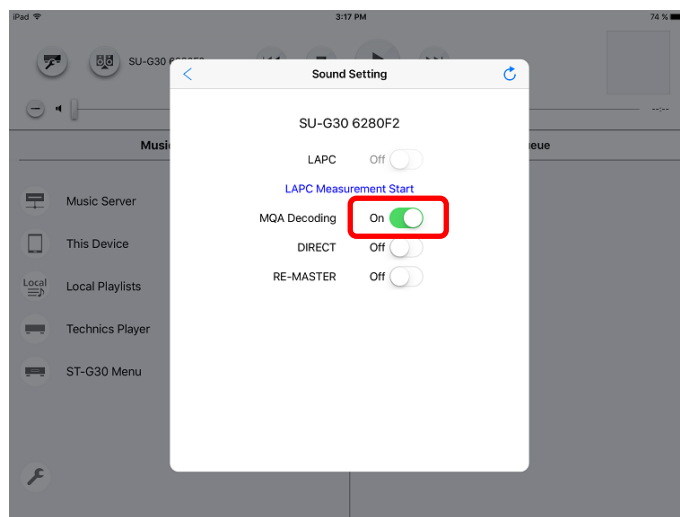
Operating procedure

1. First, tap Player Control button, and next tap Sound Setting button, Then the Sound Setting screen will be displayed.



2. Change “MQA Decoding”

- When the MQA Decoding display is "On", the MQA decoding function of Technics product will be set to "On".
- When MQA decoding function is "On", the function of DIRECT / RE-MASTER of Technics product will be set to "Off".

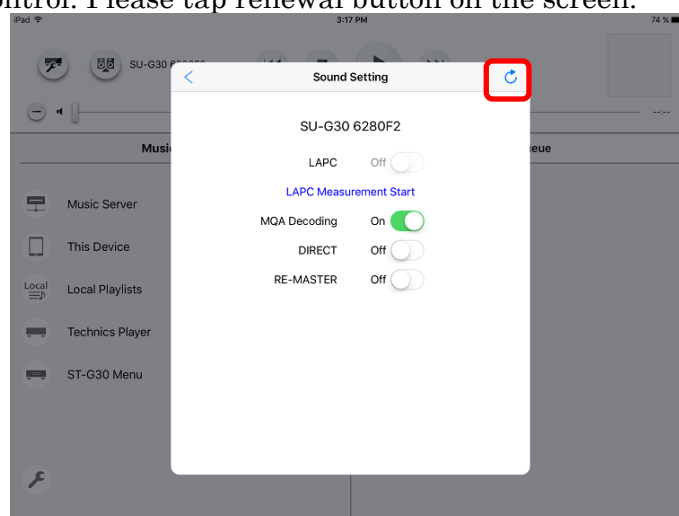


3. Playback a MQA file or stream

- Please refer to "Select song in DLNA server", "Select song in USB memory" to select song for playback.
- The information of MQA source file currently playback is displayed on the playback screen. Refer to "Switch to playback screen".

Note:

- On Sound Setting screen, of App, App doesn't update information when you control with the remote control. Please tap renewal button on the screen.



- “MQA” or “MQA Studio” indicates that the unit is decoding and playing an MQA stream or file, and denotes provenance to ensure that the sound is identical to that of the source

material. “MQA Studio” indicates it is playing an MQA Studio file, which has either been approved in the studio by the artist/producer or has been verified by the copyright owner.

- MQA files or streams may not be decoded to deliver the master quality audio depending on the output setting of the connected digital audio device. For details, refer to the operating instructions of the connected device. For information of Technics product, refer to the following website.

<http://www.technics.com/support/>

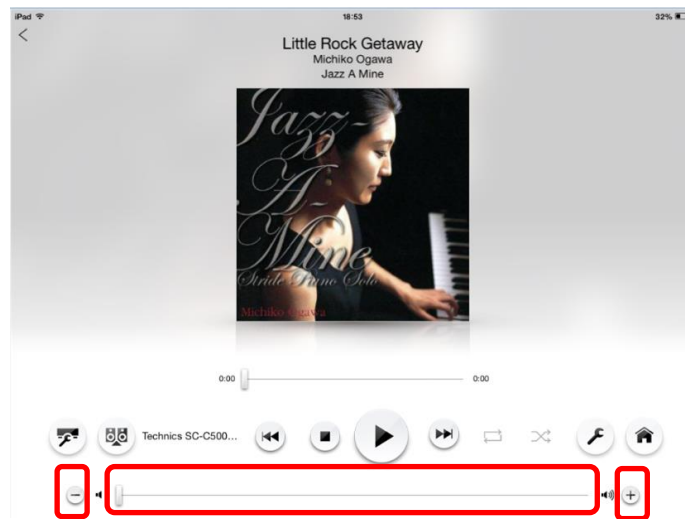
- Set the MQA decoding function to “Off” when playing back the files or streams other than those of MQA.
- When setting the MQA decoding function to “On”, “D.Output fs” will be set to “32kHz-192kHz”. (Only for models supporting the digital audio output function)
- When setting the DIRECT mode or the RE-MASTER function set to "On", the MQA decoding function will be set to "Off".
(For the DIRECT mode and RE-MASTER functions, please refer to the OI manual of Technics product.)
- The sampling frequency displayed as the information of the MQA source file is the original sampling frequency used in the mastering process.
- Specifications are subject to change without notice.

Adjust Volume and Tone Control

You can adjust the volume with the volume bar or volume button when used with the following combinations of Technics products.

- SU-R1 together with SE-R1
- SU-R1A together with SE-R1
- SU-G30
- ST-C700/ST-C700D together with SU-G700/SU-C700
- OTTAVA™ SC-C500
- SU-C550
- OTTAVA™ f SC-C70

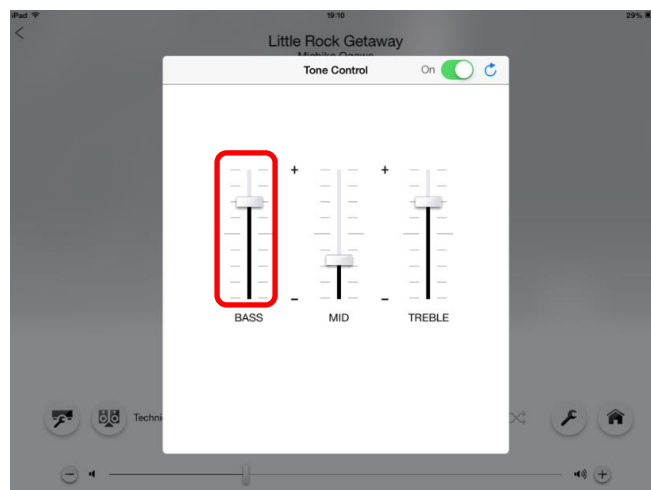
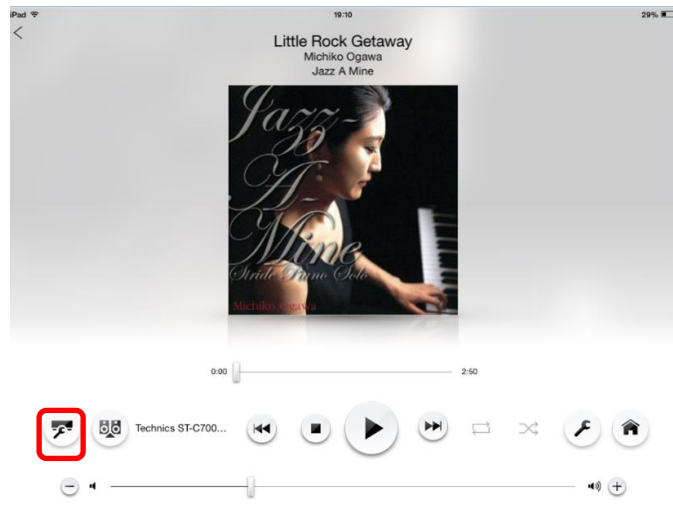
- Volume control will not function when using Bluetooth® as a Speaker System.
- By using volume button of your device, there is possibility that you cannot adjust volume of App.



You can also adjust the Tone Control(Bass/Treble/Mid) when used with the following combinations of Technics products.

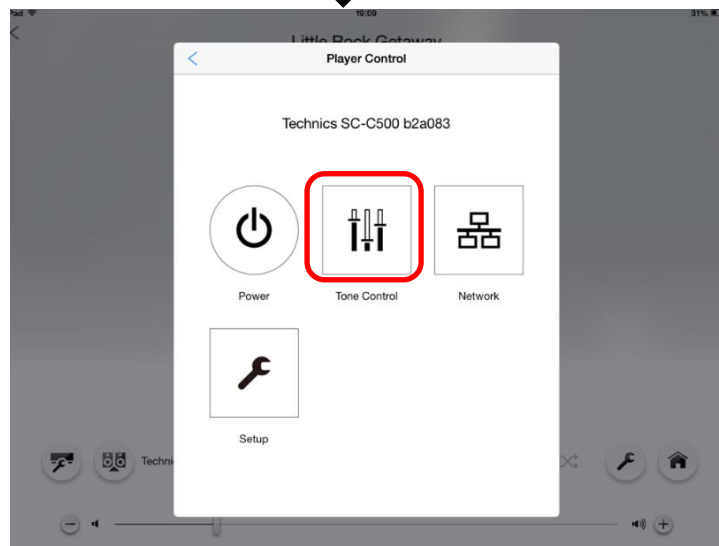
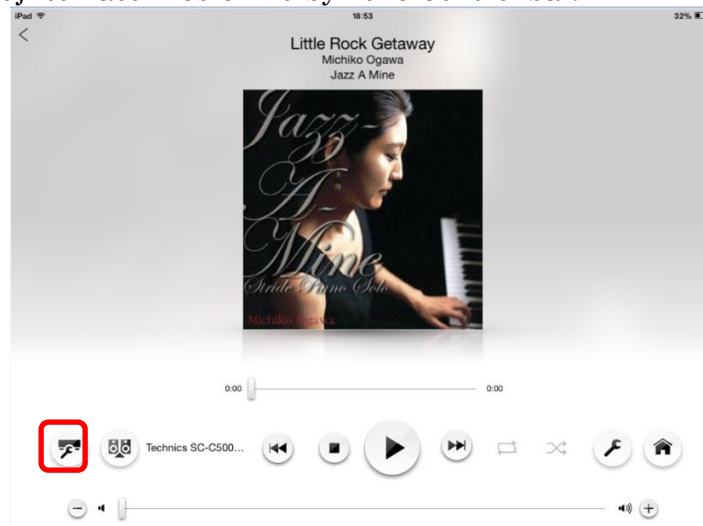
- SU-R1 together with SE-R1
- SU-R1A together with SE-R1
- ST-C700 together with SU-G700/SU-C700

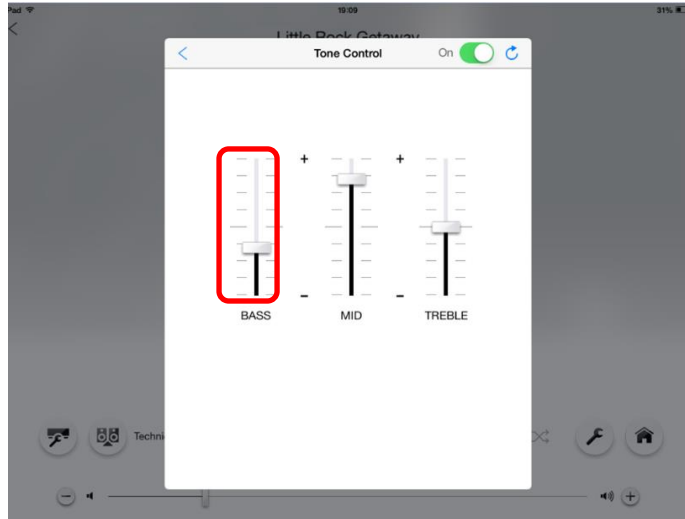
First, tap Player Control button, and adjust Bass/Treble/Mid by Tone Control bar.



- ST-C700D together with SU-G700/SU-C700
- OTTAVA™ SC-C500
- SU-C550
- SU-G30
- OTTAVA™ f SC-C70

First, tap Player Control button, and select Tone Control.
After that, adjust Bass/Treble/Mid by Tone Control bar.

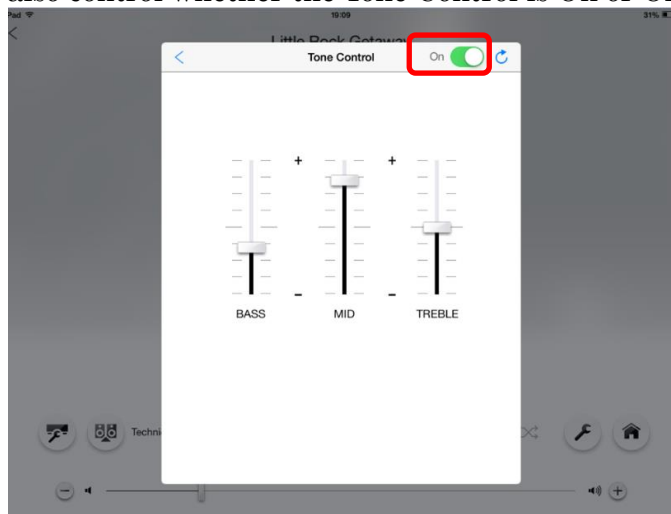




Note:

- When tap the Tone Control button, App gets Bass/Mid /Treble levels from Technics products, and update these levels in the window.

In addition, you can also control whether the Tone Control is On or Off.



The On/Off design is shown below.

-On:



-Off:



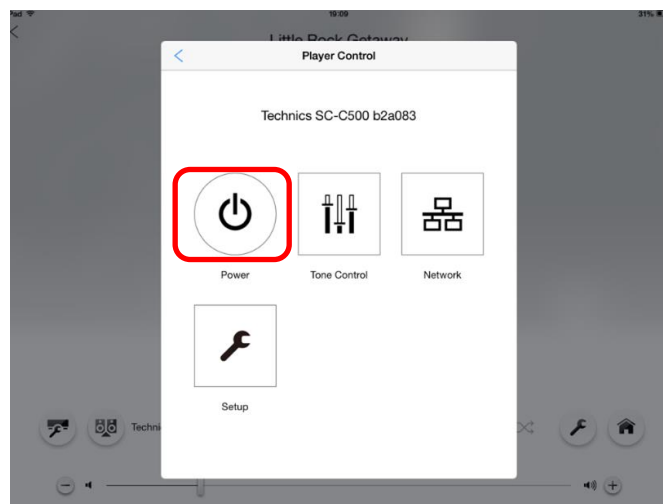
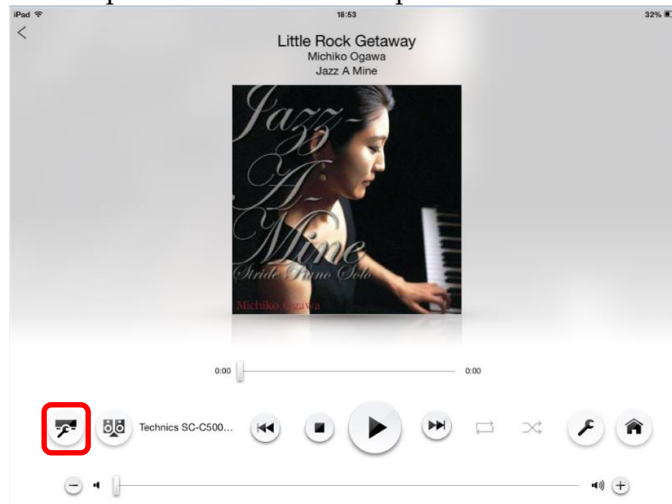
Control Power/Setup of Technics product

You can control power when used with Technics product

(SU-G30/ST-C700D/OTTAVA™ SC-C500/SU-C550 /OTTAVA™ f SC-C70).

First, tap Player Control button, and select Power.

You can control power on/power off of Technics product.



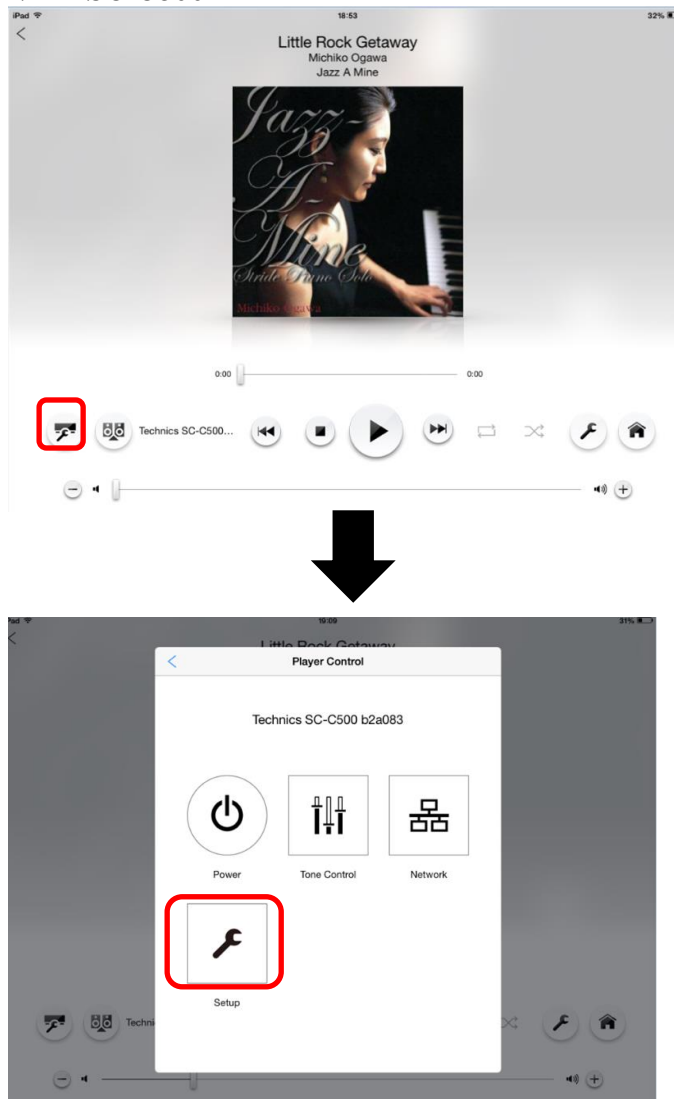
Note:

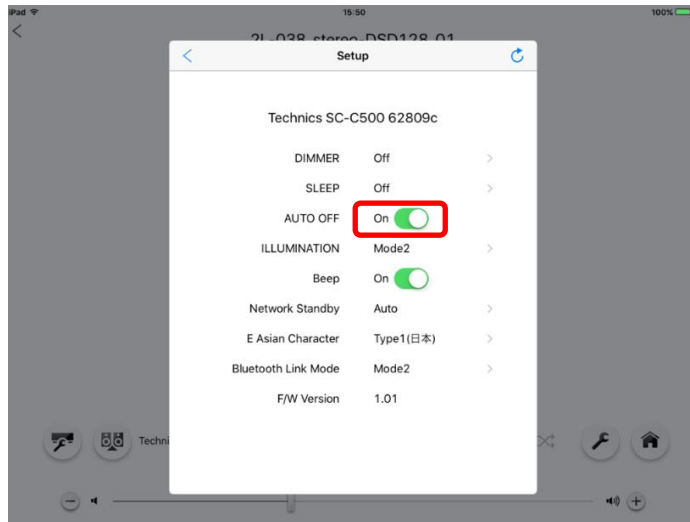
- When Network Standby is off in Technics product, you cannot power on by App

You can control setup when used with Technics product
(SU-G30/ST-C700D/OTTAVA™ SC-C500/SU-C550/OTTAVA™ f SC-C70).

First, tap Player Control button, and select Setup.
You can control any setting in Technics product.

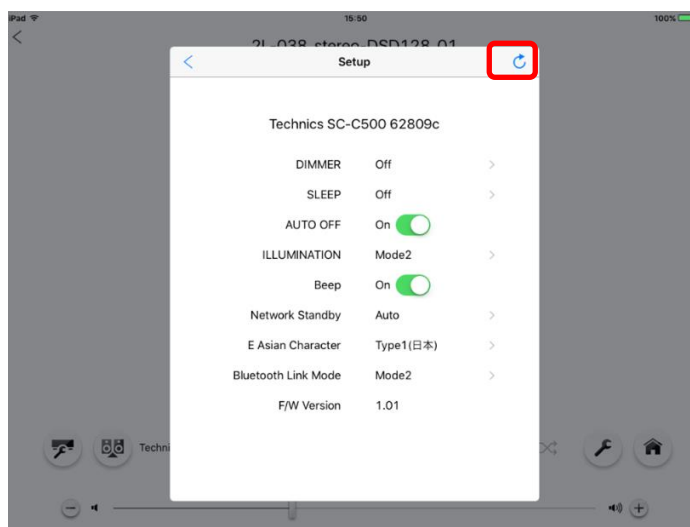
< Example: OTTAVA™ SC-C500 >





Note:

- On Setup screen, of App, App doesn't update information when you control with the remote control. Please tap renewal button on the screen.

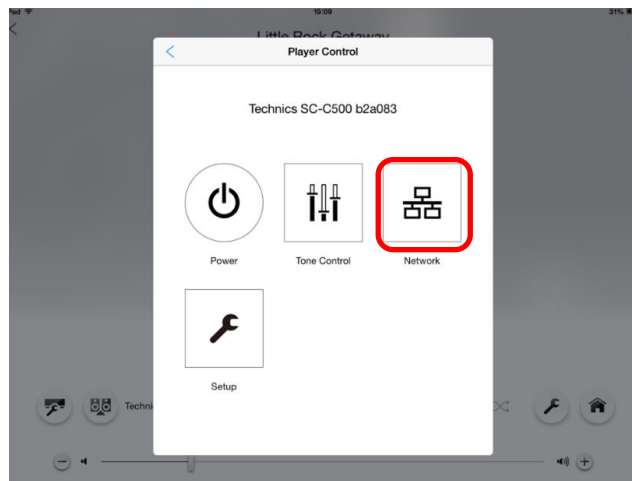
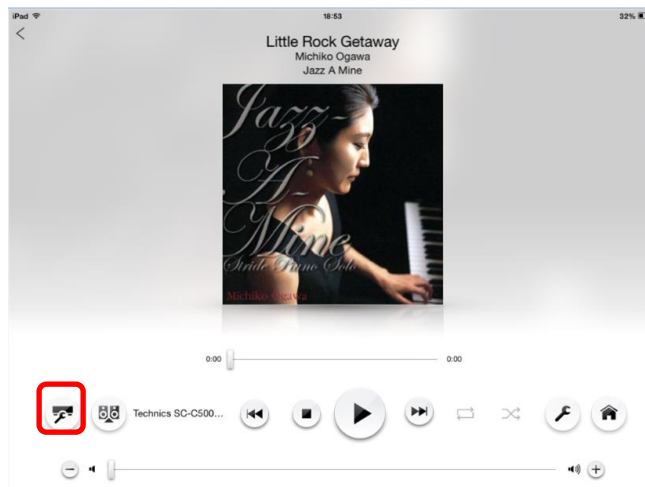


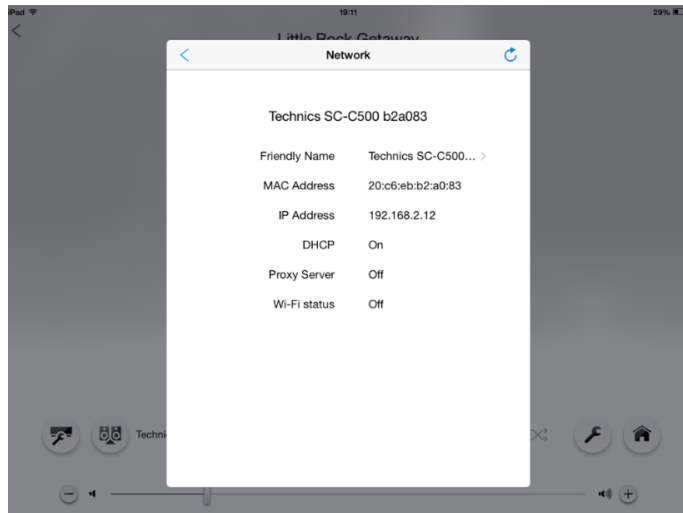
You can see network information when used with Technics product (SU-G30/ST-C700D/OTTAVA™ SC-C500/SU-C550/ OTTAVA™ f SC-C70).

First, tap Player Control button, and select Network.

You can see below informations in Technics product.

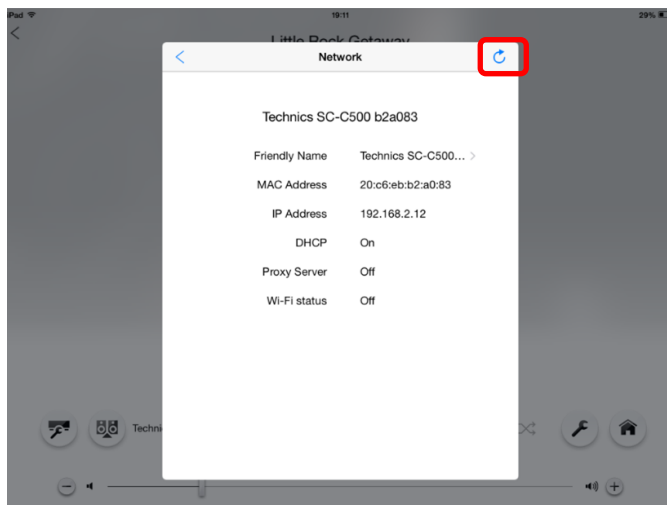
- Friendly name (you can also change Friendly name)
- MAC Address
- IP address
- DHCP setting
- Proxy server setting
- Wi-Fi status





Note:

- On Network screen, of App, App doesn't update information when you control with the remote control. Please tap renewal button on the screen.



Space Tune

By using OTTAVA™ f SC-C70,

On your iOS device, you can measure the location between your iOS device and Technics product.

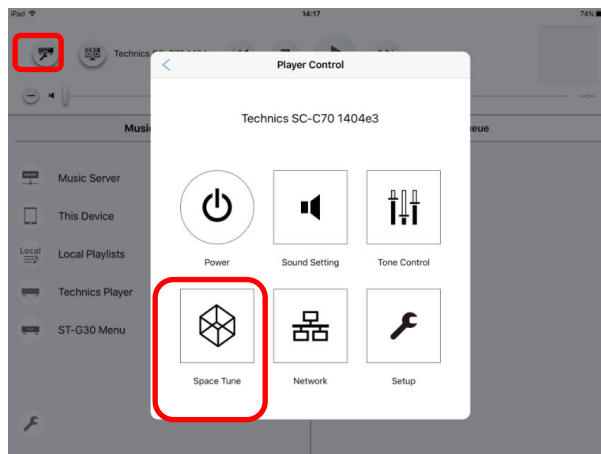
To use this function by OTTAVA™ f SC-C70, please use Technics Music App: ver1.9.0 or later.

Note:

- Before start Space Tune, please disconnect phones from iOS device.
Please remove the cover from iOS device, and disconnect headphones from Technics product.
- Make sure the room is quiet. During measurement, big sound will be output.
- Hold your iPhone in your hand and point the microphone towards the product as shown in the figure
- If error is happened, move the microphone closer to the product.
- Make sure that you can see the app while using Space Tune.
- Space Tune adjustment range is below
Within: approx. 7m (23ft) direct in front of Technics product.
Angle: Approx. 30° left and right

Step

1. First, tap Player Control button, and select Space Tune
You can see Space Tune display.



2 . You can adjust the sound quality according to the installation location(near the wall or the corner the room

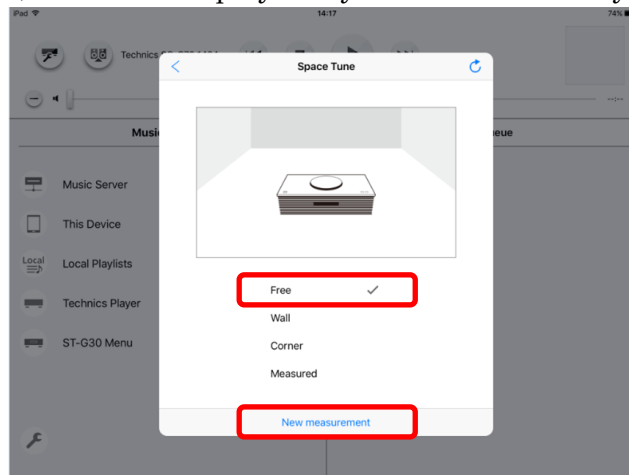
Free : No objects(wall,etc.) around Technics product(Initial value is here.)

Wall : There is a wall behind Technics product.

Corner : Technics product is in the corner of the room

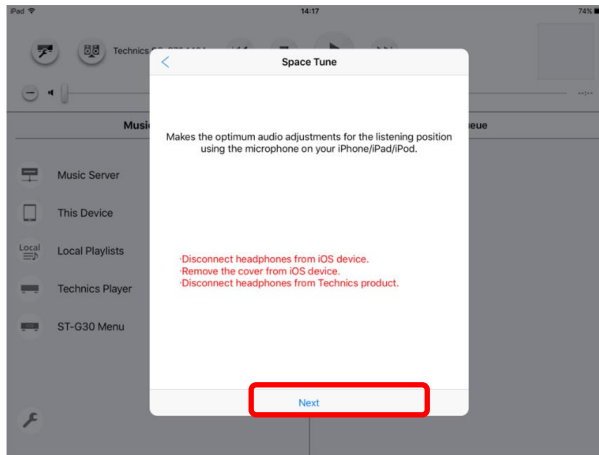
Measured: After measuring with iOS device, you can measure the location between your iOS device and Technics product.

(This is not displayed if you don't measure by iOS device.)

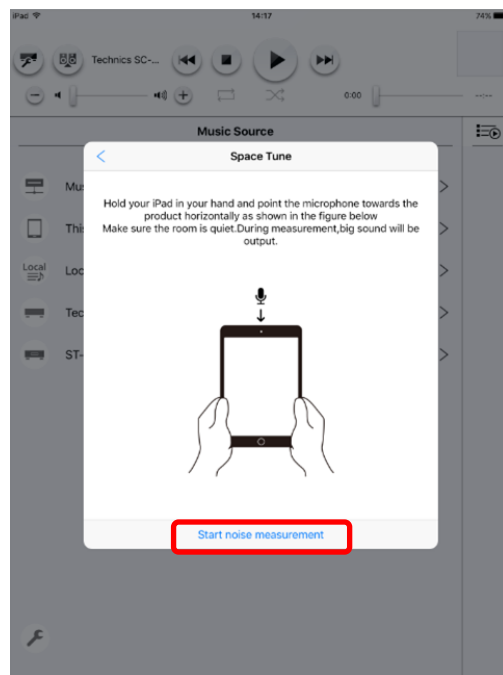


When you measure iOS device ,please select “New measurement”.

- 3 . Before measurement, please disconnect phones from iOS device.
And remove the cover from iOS device .And disconnect headphones from Technics product.
After that ,tap “Next”.

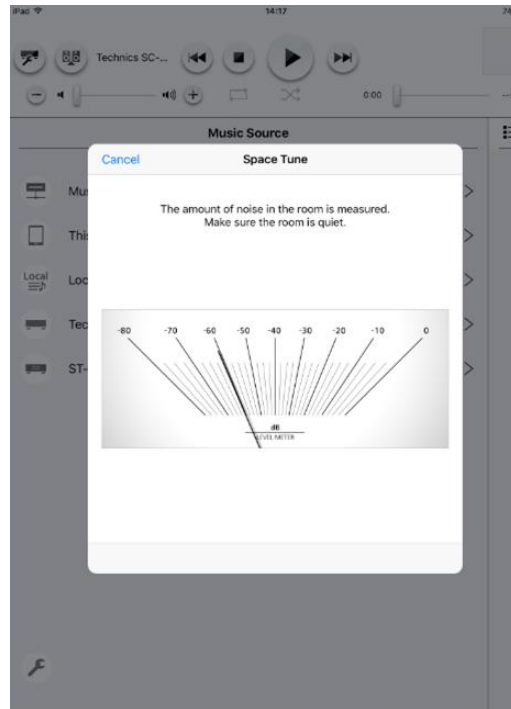


- 4 .As show in below figure, Hold your iPad in your hand and point the microphone towards the product.After that ,tap “Start noise measurement”.

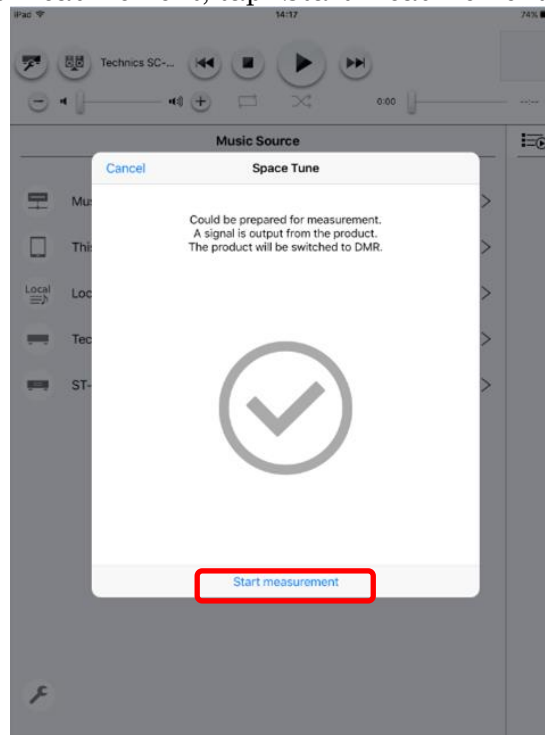


Note: When the display of permission to access to microphone,
Select “OK”.

5 . Start noise measurement

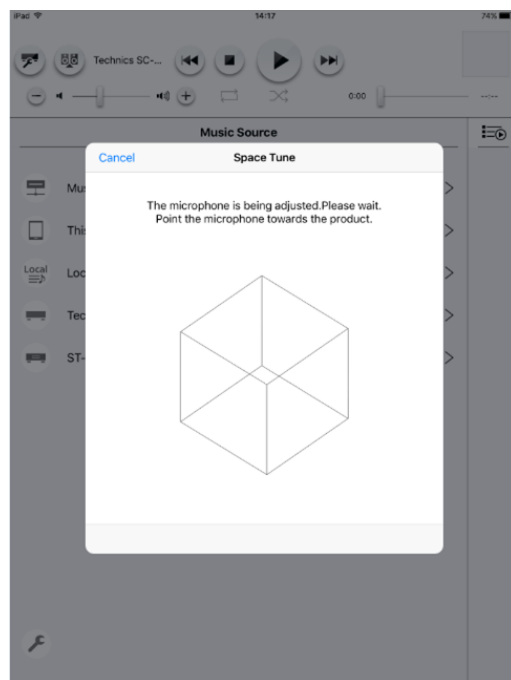


6 .After success noise measurement, tap “Start measurement”.



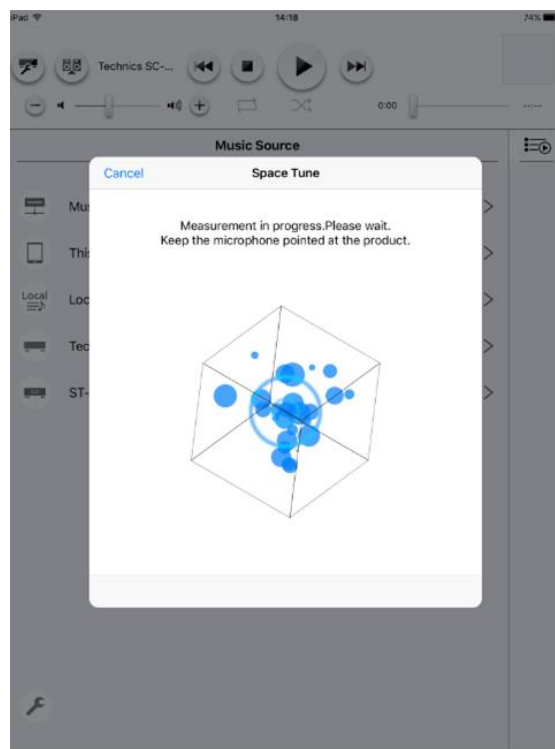
- Note:
- When error display is shown, reduce the amount of ambient noise such as people talking, and make sure the room is quiet. And try step5.
 - After tap,Technics product will be changed to DMR.

- 7 .Adjustment sounds will be output from Technics product for 5sec to adjust microphone gain of iOS device.



Note: When you fail to adjust gain, make sure the room is quiet.
And move the microphone closer to the product. Then try step3.

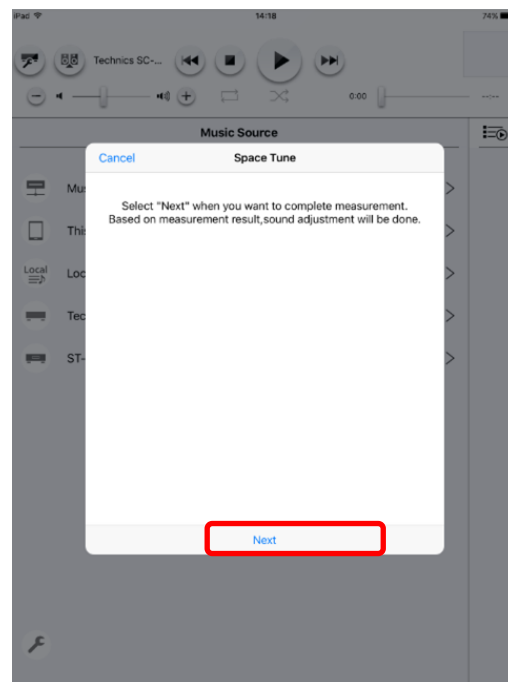
8 .After success to microphone adjustment, measurement sound will be output for 10sec from Technics product.



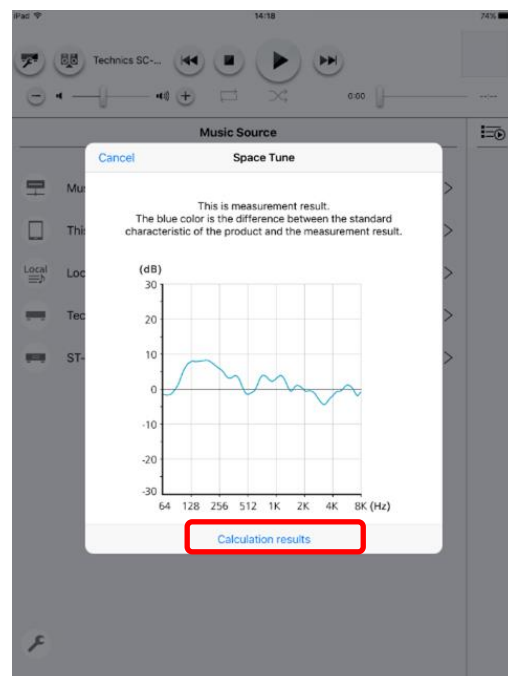
Note:

- During measurement, big sound will be output.
- When you fail to adjust gain, make sure the room is quiet.
And move the microphone closer to the product. Then try step3.

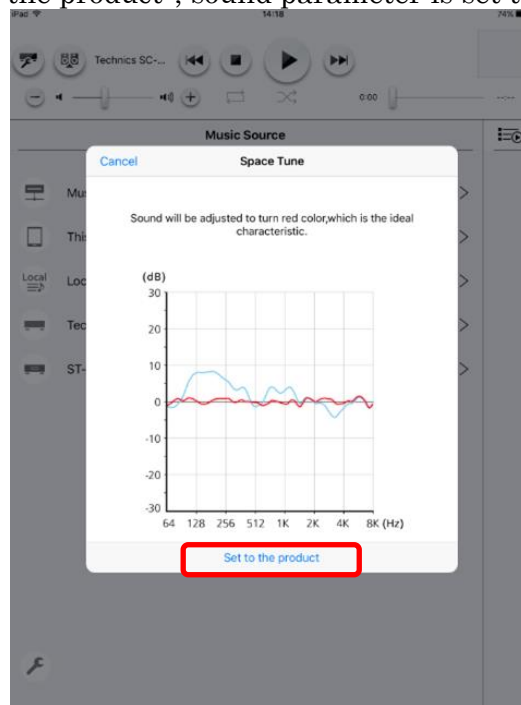
9 .After success to measurement, tap “Next”.



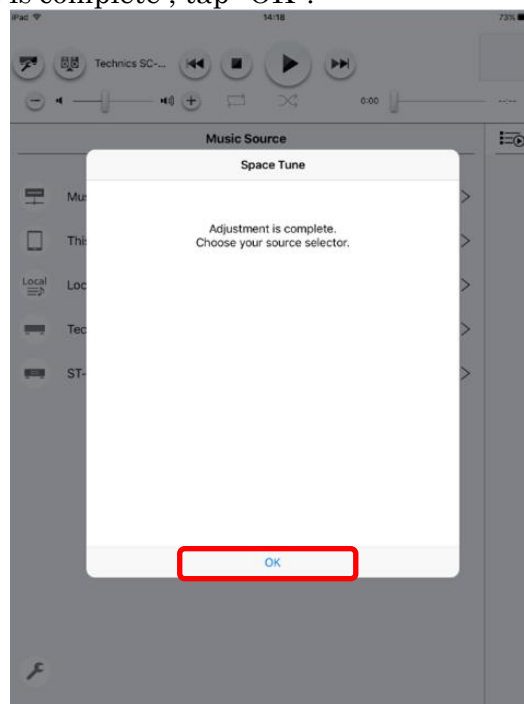
10 . The blue color is the difference between the standard characteristic of the product and the measurement result. And tap” Calculation results”.



- 11 . Sound will be adjusted to turn red color, which is the ideal characteristic.
After tap “Set to the product”, sound parameter is set to Technics product.



- 12 .After adjustment is complete , tap “OK”.



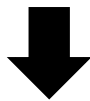
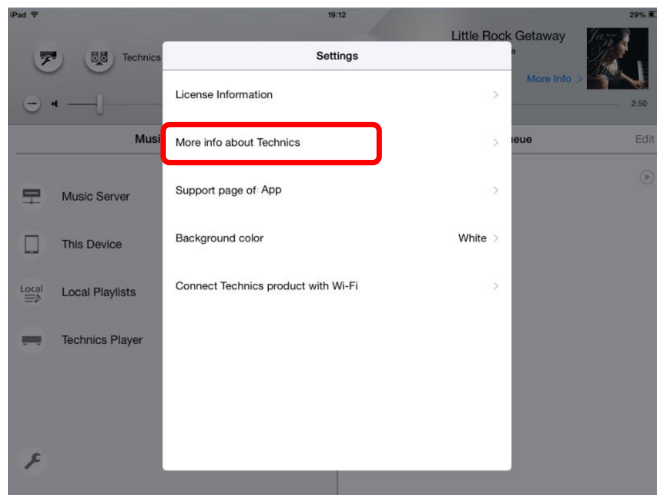
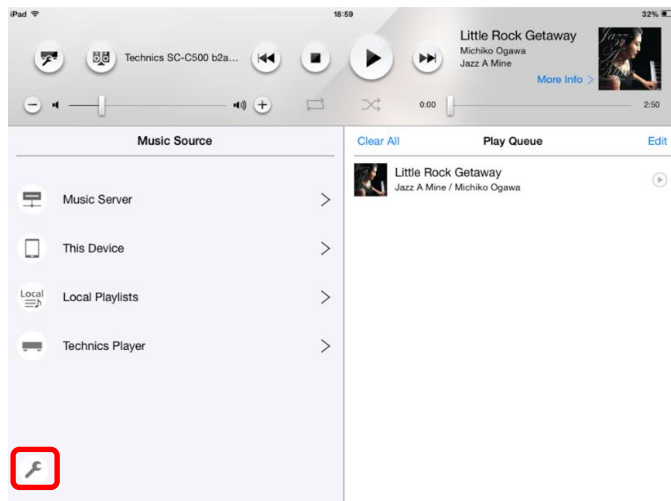
Note: When you set to Tone Control before Space Tune, Tone control setting display is shown.
Please select depend on the sound.

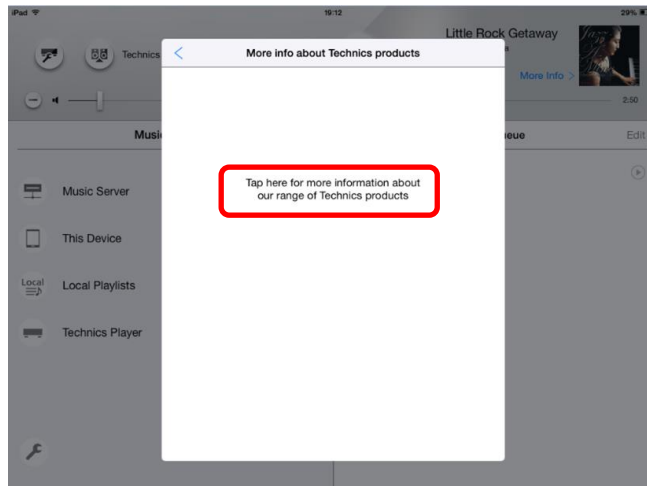
More Info about Technics

You can get more information about Technics.

Tap the Settings button,
and tap “More info about Technics”.

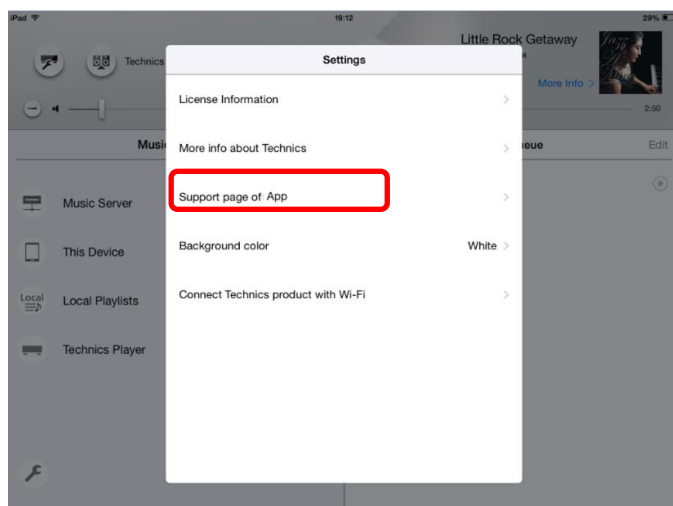
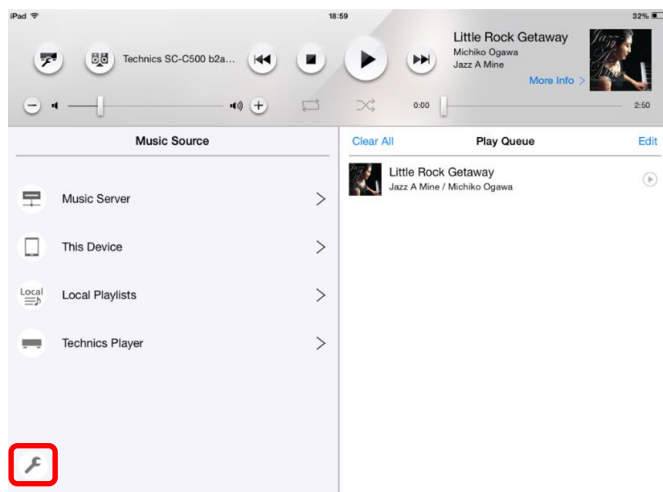
Finally, touch “Tap here for more information about our range of Technics products”.
Then you will access the Technics support site.

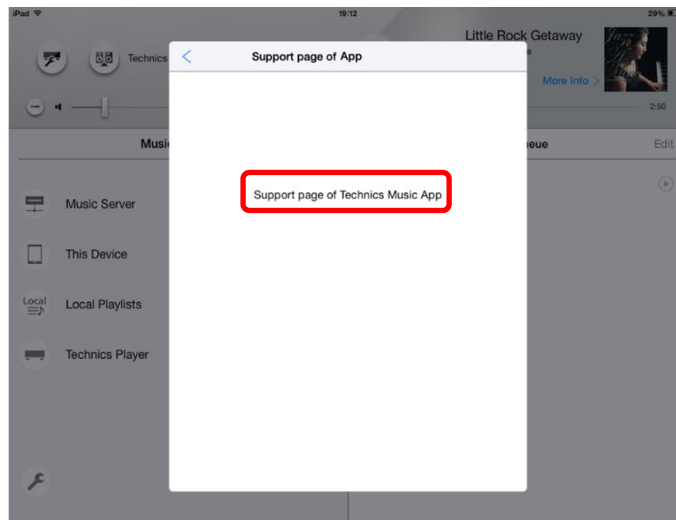




Technics Music App support page

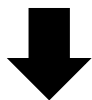
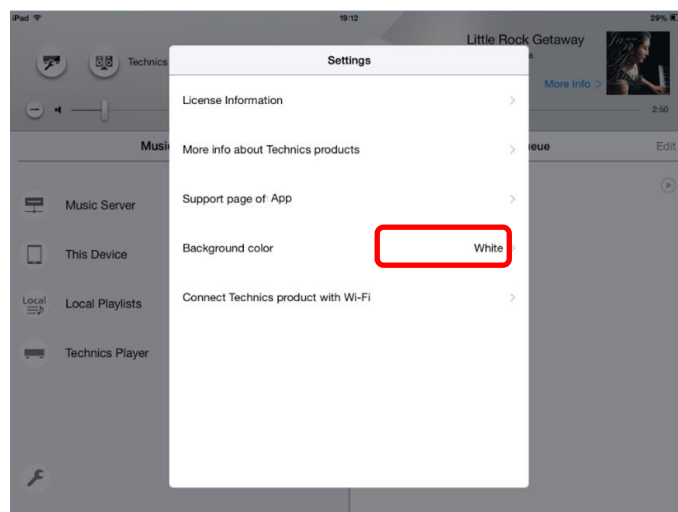
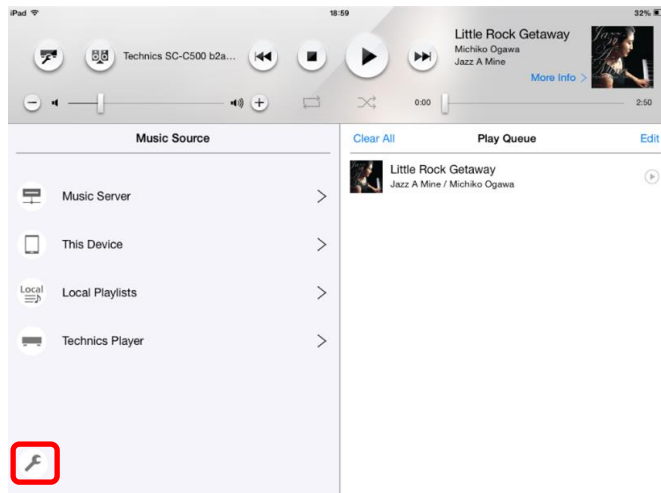
You can get more information about Technics Music App.
Tap the Settings button,
and tap “Support page of App”.
Finally, touch “Support page of Technics Music App”.
Then you will access the Technics Music App support page.

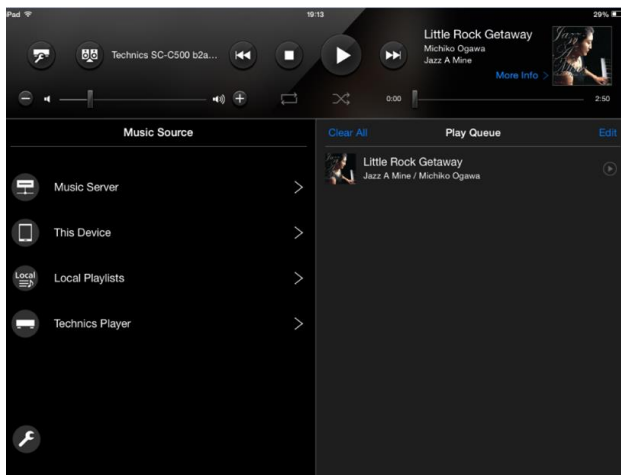
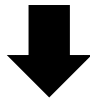
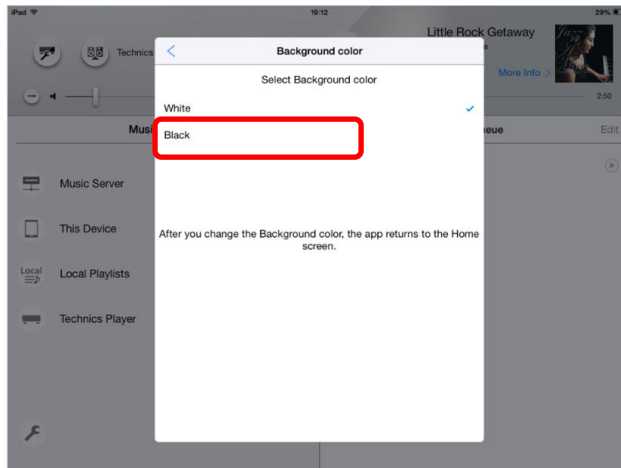




Change Background color on App

You can change Background color(White or Black) on App.
Tap the Settings button ,and tap “Background color”.
Finally, you can select Background color.





Note:

- After you change the Background color, App returns to the Home screen.
- You cannot change the Background color under Technics Player.

Troubleshooting

Messages

The following messages may be displayed on the screen.

“Music Server disconnected”

- There is a possibility that the DLNA server or NAS is disconnected from your network.
Please check your network connection.

“Speaker System disconnected”

“Cannot connect to the Speaker System.”

“Cannot connect to the Technics product”

There is a possibility that your Speaker System is disconnected from your network.
Please check below network connection.

- If using the 2.4 GHz band on the wireless router, simultaneous use with other 2.4GHz devices, such as microwaves, cordless telephones, etc., may result in connection interruptions.
Increase the distance between Technics product and these devices.
- If your wireless router supports 5 GHz band, try using the 5 GHz band.
To change to the 5 GHz band, redo the network settings.(Please refer to the OI manual of Technics product. But this 5 GHz is except OTTAVA™ f SC-C70.)
- Do not place Technics product inside a metal cabinet, for it might block the Wi-Fi signal.
- If the playback stops, check the playback status on the device.
- Place Technics product closer to the wireless router.
- If several wireless devices are simultaneously using the same wireless network as Technics product, try turning off the other devices or reducing their wireless network usage.
- Reconnect the devices to the network.
- Turn the wireless router off and then on.
- Try a wired LAN connection.
- When device is locked or sleep mode, there is a possibility that your Speaker System is disconnected from your network. Change your device setting.

“Cannot connect to the Technics product. Queue will be cleared.”

There is a possibility that network connection between App and Technics product is disconnected from your network. Please select songs and playback again .

Or there is a possibility that your Speaker System is disconnected from your network.
Please check below network connection.

- If using the 2.4 GHz band on the wireless router, simultaneous use with other 2.4GHz devices, such as microwaves, cordless telephones, etc., may result in connection interruptions.
Increase the distance between Technics product and these devices.
- If your wireless router supports 5 GHz band, try using the 5 GHz band.
To change to the 5 GHz band, redo the network settings.(Please refer to the OI manual of Technics product. But this 5 GHz is except OTTAVA™ f SC-C70.)
- Do not place Technics product inside a metal cabinet, for it might block the Wi-Fi signal.
- If the playback stops, check the playback status on the device.
- Place Technics product closer to the wireless router.
- If several wireless devices are simultaneously using the same wireless network as Technics product, try turning off the other devices or reducing their wireless network usage.
- Reconnect the devices to the network.

- Turn the wireless router off and then on.
- Try a wired LAN connection.

“Cannot Play.”

- There is a possibility that the DLNA server or NAS is disconnected from your network.
There is a possibility that the NAS (is stored song in Play Queue) is disconnected from your network. Please check your network connection.
or
- There is a possibility that your Speaker System is disconnected from your network.
Please check your network connection.
If your Technics product is connected by wireless LAN,
please connect Technics product with network router by wired LAN.
or
- You may have selected an unsupported song that cannot play on your Speaker System.
Please check the selected song.
- When you play song of TIDAL, please logout and login again.

“No songs have been selected”

- You didn't select a song. Please select a song.

Others

- **vTuner/Spotify , playback does not start. The sound is interrupted.**
 - The Internet radio station that does not broadcast cannot be played back.
 - Internet radio may not be played back properly depending on the network condition.
 - Depending on the internet connection environment, the sound may be interrupted.
 - Internet Radio is an audio broadcasting service transmitted via the Internet. Depending on the broadcaster or condition of the transmitting, the sound quality may vary.
 - Some Internet Radio stations may not be played back due to the restrictions of the country or area.
 - The Internet Radio service may be suspended or be otherwise unavailable without notice.

- **Cannot find vTuner stations.**

Cannot play registered stations and listed stations with PC

 - The Internet Radio stations, genre, region, etc. are edited and managed by vTuner. The stations on the list of vTuner may be changed without notice.
 - The Internet Radio service may be suspended or be otherwise unavailable without notice.

- **CD playback stopped or next songs of Queue is played.**
 - During CD stop condition, once this App goes to back ground or App goes to sleep mode. After that you play song from this App, playback will be stopped or next song will be played. Please select songs from App and play again.

- **TIDAL , playback does not start. The sound is interrupted.**
 - Depending on the network condition, playback may not be done properly.
 - Depending on the internet environment or the network congestion, sound may be interrupted or it may take time for playback to start.
 - Change the “TIDAL sound quality” setting, the performance may be improved.
 - The service contents may be changed or discontinued at the discretion of respective service providers without notice. Panasonic will assume no responsibility whatsoever for any damage or loss resulting from change or discontinuation of the service.

Licenses etc

- AirPlay, iPad, iPhone, iPod, iPod nano, iPod touch, and Retina are trademarks of Apple Inc., registered in the U.S. and other countries.
iPad Air and iPad mini are trademarks of Apple Inc

- The Bluetooth® word mark and logos are registered trademarks owned by the Bluetooth SIG, Inc. and any use of such marks by Panasonic Corporation is under license. Other trademarks and trade names are those of their respective owners.

About License of Technics Music App

LICENSED APPLICATION END USER LICENSE AGREEMENT

This Technics Application ("Licensed Application") made available through the Mac App Store Service and App Store Service (collectively, "App Store Service(s)") are licensed, not sold, to you from Panasonic ("Licensor"), provided that you agree to and wish to be bound by the terms of this Licensed Application End User License Agreement ("Agreement"). Licensor reserves all rights in and to the Application not expressly granted to you under this Agreement.

In addition to proprietary computer programs owned by or licensed to Licensor, the Licensed Application contains certain open source software programs licensed under several licenses ("Open-Sourced Components"). For Open-Sourced Components, please refer to the applicable license terms set forth in item j. In the event of any conflict between the terms of this Agreement and those of the Open-Sourced Components, the latter shall prevail.

a. Scope of License: This license granted to you for the Licensed Application by Licensor is limited to a nontransferable license to use the Licensed Application on any Apple-branded products running iOS (including but not limited to iPad, iPhone, and iPod touch) ("iOS Devices") or Mac OS X ("Mac Computers"), as applicable (collectively, "Apple Device(s)") that you own or control and as permitted by the usage rules set forth in the App Store Terms and Conditions (the "Usage Rules"). This license does not allow you to use the Licensed Application on any Apple Device that you do not own or control, and except as provided in the Usage Rules, you may not distribute or make the Licensed Application available over a network where it could be used by multiple devices at the same time. You may not rent, lease, lend, sell, transfer redistribute, or sublicense the Licensed Application and, if you sell your Mac Computer or iOS Device to a third party, you must remove the Licensed Application from the Mac Computer or iOS Device before doing so. You may not copy (except as expressly permitted by this license and the Usage Rules), decompile, reverse-engineer, disassemble, attempt to derive the source code of, modify, or create derivative works of the Licensed Application, any updates, any part, or any derivative works thereof (including but not limited to information or data communicated or exchanged between or among audio visual products such as component stereos, speakers, Blu-ray Disc players/recorders, and/or servers owned or controlled by the Licensor or any third party(ies)) (except as and only to the extent that any foregoing restriction is prohibited by applicable law or to the extent as may be permitted by the licensing terms governing use of any Open-Sourced Components included with the Licensed Application). Any attempt to do so is a violation of the rights of the Licensor and its licensors. If you breach this restriction, you may be subject to prosecution and damages.

The terms of this license will govern any upgrades provided by Licensor that replace and/or supplement the original Licensed Application, unless such upgrade is accompanied by a separate license in which case the terms of that license will govern.

b. Termination. The license is effective until terminated by you or Licensor. Your rights under this license will terminate automatically without notice from the Licensor if you fail to comply with any term(s) of this license. Upon termination of the license, you shall cease all use of the Licensed Application and destroy all copies, full or partial, of the Licensed Application.

c. Services; Third-Party Materials. The Licensed Application may enable access to Apple's, Licensor's and/or third-party services and websites individually referred as "Licensor Services" and "Third Party Services", collectively "Services"). Use of the Services requires Internet access and use of certain Services requires you to accept additional terms. You agree that you may not use the Services without acceptance of such additional terms. You agree that Third Party Services are not the responsibility of Licensor. The Third Party Services are operated by third party companies other than Licensor and are not under the control of Licensor. The inclusion of Third Party Services on the Service does not imply endorsement or sponsorship of the application by Licensor.

You understand that by using any of the Services, you may encounter content that may be deemed offensive, indecent, or objectionable, which content may or may not be identified as having explicit language, and that the results of any search or entering of a particular URL may automatically and unintentionally generate links or references to objectionable material. Nevertheless, you agree to use the Services at your sole risk and that neither the Licensor nor Apple shall have any liability to you for content that may be found to be offensive, indecent, or objectionable.

Certain Services may display, include or make available content, data, information, applications or materials from third parties ("Third Party Materials") or provide links to certain third party web sites. By using the Services, you acknowledge and agree that neither the Licensor nor Apple is responsible for examining or evaluating the content, accuracy, completeness, timeliness, validity, copyright compliance, legality, decency, quality or any other aspect of such Third Party Materials or web sites. Apple, the Licensor, and its officers, affiliates and subsidiaries do not warrant or endorse and do not assume and will not have any liability or responsibility to you or any other person for any third-party Services, Third Party Materials or web sites, or for any other materials, products, or services of third parties. Third Party Materials and links to other web sites are provided solely as a convenience to you.

Financial information displayed by any Services is for general informational purposes only and should not be relied upon as investment advice. Before executing any securities transaction based upon information obtained through the Services, you should consult with a financial or securities professional who is legally qualified to give financial or securities advice in your country or region. Location data provided by any Services is for basic navigational purposes only and is not intended to be relied upon in situations where precise location information is needed or where erroneous, inaccurate, time-delayed or incomplete location data may lead to death, personal injury, property or environmental damage. Neither the Licensor nor Apple or any of its content providers guarantees the availability, accuracy, completeness, reliability, or timeliness of stock information, location data or any other data displayed by any Services.

You agree that the Services contain proprietary content, information and material that is owned by Licensor, Apple and/or its licensors, and is protected by applicable intellectual property and other laws, including but not limited to copyright, and that you will not use such proprietary content, information or materials in any way whatsoever except for permitted use of the Services or in any manner that is inconsistent with the terms of this license or that infringes any intellectual property rights of a third party, the Licensor or Apple. No portion of the Services may be reproduced in any form or by any means. You agree not to modify, rent, lease, loan, sell, distribute, or create derivative works based on the Services, in any manner, and you shall not exploit the Services in any unauthorized way whatsoever, including but not limited to, using the Services to transmit any computer viruses, worms, trojan horses or other malware, or by trespass or burdening network capacity. You further agree not to use the Services in any manner to harass, abuse, stalk, threaten, defame or otherwise infringe or violate the rights of any other party, and that neither Licensor nor Apple is in any way responsible for any such use by you, nor for any harassing, threatening, defamatory, offensive, infringing or illegal messages or transmissions that you may receive as a result of using any of the Services.

In addition, Services and Third Party Materials that may be accessed from, displayed on or linked to

from the Apple Devices are not available in all languages or in all countries or regions. Licensor makes no representation that such Services and Materials are appropriate or available for use in any particular location. To the extent you choose to use or access such Services and Materials, you do so at your own initiative and are responsible for compliance with any applicable laws, including but not limited to applicable local laws. Licensor reserves the right to change, suspend, remove, or disable access to any Services at any time without notice. In no event will Licensor be liable for the removal of or disabling of access to any such Services. Licensor may also impose limits on the use of or access to certain Services, in any case and without notice or liability.

d. NO WARRANTY: YOU EXPRESSLY ACKNOWLEDGE AND AGREE THAT USE OF THE LICENSED APPLICATION IS AT YOUR SOLE RISK AND THAT THE ENTIRE RISK AS TO SATISFACTORY QUALITY, PERFORMANCE, ACCURACY, AND EFFORT IS WITH YOU. TO THE MAXIMUM EXTENT PERMITTED BY APPLICABLE LAW, THE LICENSED APPLICATION AND SERVICES ARE PROVIDED "AS IS" AND "AS AVAILABLE", WITH ALL FAULTS AND WITHOUT WARRANTY OF ANY KIND, AND LICENSOR HEREBY DISCLAIMS ALL WARRANTIES AND CONDITIONS WITH RESPECT TO THE LICENSED APPLICATION AND ANY SERVICES, EITHER EXPRESS, IMPLIED, OR STATUTORY, INCLUDING, BUT NOT LIMITED TO, THE IMPLIED WARRANTIES AND/OR CONDITIONS OF MERCHANTABILITY, OF SATISFACTORY QUALITY, OF FITNESS FOR A PARTICULAR PURPOSE, OF ACCURACY, OF QUIET ENJOYMENT, AND OF NONINFRINGEMENT OF THIRD-PARTY RIGHTS. LICENSOR DOES NOT WARRANT AGAINST INTERFERENCE WITH YOUR ENJOYMENT OF THE LICENSED APPLICATION, THAT THE FUNCTIONS CONTAINED IN OR SERVICES PERFORMED OR PROVIDED BY THE LICENSED APPLICATION WILL MEET YOUR REQUIREMENTS, THAT THE OPERATION OF THE LICENSED APPLICATION OR SERVICES WILL BE UNINTERRUPTED OR ERROR-FREE, OR THAT DEFECTS IN THE LICENSED APPLICATION OR SERVICES WILL BE CORRECTED. NO ORAL OR WRITTEN INFORMATION OR ADVICE GIVEN BY LICENSOR OR ITS AUTHORIZED REPRESENTATIVE SHALL CREATE A WARRANTY. SHOULD THE LICENSED APPLICATION OR SERVICES PROVE DEFECTIVE, YOU ASSUME THE ENTIRE COST OF ALL NECESSARY SERVICING, REPAIR, OR CORRECTION. SOME JURISDICTIONS DO NOT ALLOW THE EXCLUSION OF IMPLIED WARRANTIES OR LIMITATIONS ON APPLICABLE STATUTORY RIGHTS OF A CONSUMER, SO THE ABOVE EXCLUSION AND LIMITATIONS MAY NOT APPLY TO YOU.

e. Limitation of Liability. TO THE EXTENT NOT PROHIBITED BY LAW, IN NO EVENT SHALL LICENSOR BE LIABLE FOR PERSONAL INJURY OR ANY INCIDENTAL, SPECIAL, INDIRECT, OR CONSEQUENTIAL DAMAGES WHATSOEVER, INCLUDING, WITHOUT LIMITATION, DAMAGES FOR LOSS OF PROFITS, LOSS OF DATA, BUSINESS INTERRUPTION, OR ANY OTHER COMMERCIAL DAMAGES OR LOSSES, ARISING OUT OF OR RELATED TO YOUR USE OR INABILITY TO USE THE LICENSED APPLICATION, HOWEVER CAUSED, REGARDLESS OF THE THEORY OF LIABILITY (CONTRACT, TORT, OR OTHERWISE) AND EVEN IF LICENSOR HAS BEEN ADVISED OF THE POSSIBILITY OF SUCH DAMAGES. SOME JURISDICTIONS DO NOT ALLOW THE LIMITATION OF LIABILITY FOR PERSONAL INJURY, OR OF INCIDENTAL OR CONSEQUENTIAL DAMAGES, SO THIS LIMITATION MAY NOT APPLY TO YOU. In no event shall Licensor's total liability to you for all damages (other than as may be required by applicable law in cases involving personal injury) exceed the amount of fifty dollars (\$50.00). The foregoing limitations will apply even if the above stated remedy fails of its essential purpose.

f. You may not use or otherwise export or re-export the Licensed Application except as authorized by United States law and the laws of the jurisdiction in which the Licensed Application was obtained. In particular, but without limitation, the Licensed Application may not be exported or re-exported (a) into any U.S.-embargoed countries or (b) to anyone on the U.S. Treasury Department's Specially Designated Nationals List or the U.S. Department of Commerce Denied Persons List or Entity List. By using the Licensed Application, you represent and warrant that you are not located in any such country or on any such list. You also agree that you will not use these products for any purposes prohibited by United States law, including, without limitation, the development, design, manufacture, or production of nuclear, missile, or chemical or biological weapons.

g. The Licensed Application and related documentation are "Commercial Items", as that term is defined at 48 C.F.R. §2.101, consisting of "Commercial Computer Software" and "Commercial Computer Software Documentation", as such terms are used in 48 C.F.R. §12.212 or 48 C.F.R. §227.7202, as applicable. Consistent with 48 C.F.R. §12.212 or 48 C.F.R. §227.7202-1 through 227.7202-4, as applicable, the Commercial Computer Software and Commercial Computer Software Documentation are being licensed to U.S. Government end users (a) only as Commercial Items and (b) with only those rights as are granted to all other end users pursuant to the terms and conditions herein. Unpublished-rights reserved under the copyright laws of the United States.

h. The following are the copyright notices of the Licensed Application.

Copyright (c) 2012, Panasonic Corporation

Copyright (c) 1996 - 2011, Daniel Stenberg, <daniel@haxx.se>.

Copyright (c) 2004-2010 Sergey Lyubka

Copyright (c) 2009 The Android Open Source Project

i. The following license terms shall be applied to Open-Sourced Components.

i-1. cURL

Copyright (c) 1996 - 2011, Daniel Stenberg, <daniel@haxx.se>.

All rights reserved.

Permission to use, copy, modify, and distribute this software for any purpose with or without fee is hereby granted, provided that the above copyright notice and this permission notice appear in all copies.

THE SOFTWARE IS PROVIDED "AS IS", WITHOUT WARRANTY OF ANY KIND, EXPRESS OR IMPLIED, INCLUDING BUT NOT LIMITED TO THE WARRANTIES OF MERCHANTABILITY, FITNESS FOR A PARTICULAR PURPOSE AND NONINFRINGEMENT OF THIRD PARTY RIGHTS. IN NO EVENT SHALL THE AUTHORS OR COPYRIGHT HOLDERS BE LIABLE FOR ANY CLAIM, DAMAGES OR OTHER LIABILITY, WHETHER IN AN ACTION OF CONTRACT, TORT OR OTHERWISE, ARISING FROM, OUT OF OR IN CONNECTION WITH THE SOFTWARE OR THE USE OR OTHER DEALINGS IN THE SOFTWARE.

Except as contained in this notice, the name of a copyright holder shall not be used in advertising or otherwise to promote the sale, use or other dealings in this Software without prior written authorization of the copyright holder.

i-2. Mongoose

Copyright (c) 2004-2010 Sergey Lyubka

Permission is hereby granted, free of charge, to any person obtaining a copy of this software and associated documentation files (the "Software"), to deal in the Software without restriction, including

without limitation the rights to use, copy, modify, merge, publish, distribute, sublicense, and/or sell copies of the Software, and to permit persons to whom the Software is furnished to do so, subject to the following conditions:

The above copyright notice and this permission notice shall be included in all copies or substantial portions of the Software.

THE SOFTWARE IS PROVIDED "AS IS", WITHOUT WARRANTY OF ANY KIND, EXPRESS OR IMPLIED, INCLUDING BUT NOT LIMITED TO THE WARRANTIES OF MERCHANTABILITY, FITNESS FOR A PARTICULAR PURPOSE AND NONINFRINGEMENT. IN NO EVENT SHALL THE AUTHORS OR COPYRIGHT HOLDERS BE LIABLE FOR ANY CLAIM, DAMAGES OR OTHER LIABILITY, WHETHER IN AN ACTION OF CONTRACT, TORT OR OTHERWISE, ARISING FROM, OUT OF OR IN CONNECTION WITH THE SOFTWARE OR THE USE OR OTHER DEALINGS IN THE SOFTWARE.

i-3. Stage Fright

Copyright (C) 2009 The Android Open Source Project

Licensed under the Apache License, Version 2.0 (the "License"); you may not use this file except in compliance with the License. You may obtain a copy of the License at <http://www.apache.org/licenses/LICENSE-2.0>

Unless required by applicable law or agreed to in writing, software distributed under the License is distributed on an "AS IS" BASIS, WITHOUT WARRANTIES OR CONDITIONS OF ANY KIND, either express or implied. See the License for the specific language governing permissions and limitations under the License.

i-4. SDWebImage

Copyright (c) 2016 Olivier Poitrey rs@dailymotion.com

Permission is hereby granted, free of charge, to any person obtaining a copy of this software and associated documentation files (the "Software"), to deal in the Software without restriction, including without limitation the rights to use, copy, modify, merge, publish, distribute, sublicense, and/or sell copies of the Software, and to permit persons to whom the Software is furnished to do so, subject to the following conditions:

The above copyright notice and this permission notice shall be included in all copies or substantial portions of the Software.

THE SOFTWARE IS PROVIDED "AS IS", WITHOUT WARRANTY OF ANY KIND, EXPRESS OR

IMPLIED, INCLUDING BUT NOT LIMITED TO THE WARRANTIES OF MERCHANTABILITY, FITNESS FOR A PARTICULAR PURPOSE AND NONINFRINGEMENT. IN NO EVENT SHALL THE AUTHORS OR COPYRIGHT HOLDERS BE LIABLE FOR ANY CLAIM, DAMAGES OR OTHER LIABILITY, WHETHER IN AN ACTION OF CONTRACT, TORT OR OTHERWISE, ARISING FROM, OUT OF OR IN CONNECTION WITH THE SOFTWARE OR THE USE OR OTHER DEALINGS IN THE SOFTWARE.

j. You acknowledge and agree that Apple, and Apple's subsidiaries, are third party beneficiaries of this agreement, and that, upon your acceptance of the terms and conditions of this agreement, Apple will have the right (and will be deemed to have accepted the right) to enforce this agreement against you as a third party beneficiary thereof.

k. The laws of the State of California, excluding its conflicts of law rules, govern this license and your use of the Licensed Application. Your use of the Licensed Application may also be subject to other local, state, national, or international laws.

Gracenote® End User License Agreement

This application or device contains software from Gracenote, Inc. of Emeryville, California ("Gracenote"). The software from Gracenote (the "Gracenote Software") enables this application to perform disc and/or file identification and obtain music-related information, including name, artist, track, and title information ("Gracenote Data") from online servers or embedded databases (collectively, "Gracenote Servers") and to perform other functions. You may use Gracenote Data only by means of the intended End-User functions of this application or device.

You agree that you will use Gracenote Data, the Gracenote Software, and Gracenote Servers for your own personal non-commercial use only. You agree not to assign, copy, transfer or transmit the Gracenote Software or any Gracenote Data to any third party. **YOU AGREE NOT TO USE OR EXPLOIT GRACENOTE DATA, THE GRACENOTE SOFTWARE, OR GRACENOTE SERVERS, EXCEPT AS EXPRESSLY PERMITTED HEREIN.**

You agree that your non-exclusive license to use the Gracenote Data, the Gracenote Software, and Gracenote Servers will terminate if you violate these restrictions. If your license terminates, you agree to cease any and all use of the Gracenote Data, the Gracenote Software, and Gracenote Servers. Gracenote reserves all rights in Gracenote Data, the Gracenote Software, and the Gracenote Servers, including all ownership rights. Under no circumstances will Gracenote become liable for any payment to you for any information that you provide. You agree that Gracenote, Inc. may enforce its rights under this Agreement against you directly in its own name.

The Gracenote service uses a unique identifier to track queries for statistical purposes. The purpose of a randomly assigned numeric identifier is to allow the Gracenote service to count queries without knowing anything about who you are. For more information, see the web page for the Gracenote Privacy Policy for the Gracenote service.

The Gracenote Software and each item of Gracenote Data are licensed to you “AS IS.” Gracenote makes no representations or warranties, express or implied, regarding the accuracy of any Gracenote Data from in the Gracenote Servers. Gracenote reserves the right to delete data from the Gracenote Servers or to change data categories for any cause that Gracenote deems sufficient. No warranty is made that the Gracenote Software or Gracenote Servers are error-free or that functioning of Gracenote Software or Gracenote Servers will be uninterrupted. Gracenote is not obligated to provide you with new enhanced or additional data types or categories that Gracenote may provide in the future and is free to discontinue its services at any time.

GRACENOTE DISCLAIMS ALL WARRANTIES EXPRESS OR IMPLIED, INCLUDING, BUT NOT LIMITED TO, IMPLIED WARRANTIES OF MERCHANTABILITY, FITNESS FOR A PARTICULAR PURPOSE, TITLE, AND NON-INFRINGEMENT. GRACENOTE DOES NOT WARRANT THE RESULTS THAT WILL BE OBTAINED BY YOUR USE OF THE GRACENOTE SOFTWARE OR ANY GRACENOTE SERVER. IN NO CASE WILL GRACENOTE BE LIABLE FOR ANY CONSEQUENTIAL OR INCIDENTAL DAMAGES OR FOR ANY LOST PROFITS OR LOST REVENUES.

© Gracenote, Inc. 2009

Portions of the content are copyright(c) of Gracenote or its providers.

Manufactured under license from MQA Limited. The MQA logo is a trade mark of MQA Limited.

Last updated May 23, 2018

Information regarding the Licensor (Licensed Application provider)

- Name: Panasonic Corporation
- Address: 1-15 Matsuo-cho, Kadoma City, Osaka 571-8501 JAPAN
- Contact : http://panasonic.net/corporate/global_network/

© Panasonic Corporation 2018

23051820